

# Recombinant Human CHI3L2/YKL-39 Protein (His Tag)

**DIA • AN**<sup>®</sup>  
by Elabscience

Catalog Number: PKSH033718

**Note:** Centrifuge before opening to ensure complete recovery of vial contents.

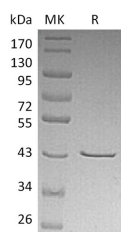
## Description

<b>Synonyms</b>	Chitinase-3-Like Protein 2; Chondrocyte Protein 39; YKL-39; CHI3L2; CHIL2; YKL-39; YKL39
<b>Species</b>	Human
<b>Expression Host</b>	HEK293 Cells
<b>Sequence</b>	Tyr27-Leu390
<b>Accession</b>	AAH11460.1
<b>Calculated Molecular Weight</b>	41.9 kDa
<b>Observed molecular weight</b>	40 kDa
<b>Tag</b>	C-His

## Properties

<b>Purity</b>	> 95 % as determined by reducing SDS-PAGE.
<b>Endotoxin</b>	< 1.0 EU per µg of the protein as determined by the LAL method.
<b>Storage</b>	Generally, lyophilized proteins are stable for up to 12 months when stored at -20 to -80°C. Reconstituted protein solution can be stored at 4-8°C for 2-7 days. Aliquots of reconstituted samples are stable at < -20°C for 3 months.
<b>Shipping</b>	This product is provided as lyophilized powder which is shipped with ice packs.
<b>Formulation</b>	Lyophilized from a 0.2 µm filtered solution of PBS, 5% Trehalose, 5% Mannitol, 0.01% Tween 80, pH 7.4. Normally 5 % - 8 % trehalose, mannitol and 0.01 % Tween80 are added as protectants before lyophilization. Please refer to the specific buffer in
<b>Reconstitution</b>	Please refer to the printed manual for detailed information.

## Data



> 95 % as determined by reducing SDS-PAGE.

## Background

Chitinase 3-Like Protein 2 (CHI3L2) is a 39 kDa secreted glycoprotein which belongs to the glycosyl hydrolase 18 family and the most closely related to human cartilage glycoprotein 39, which promotes the growth of human synovial cells as well as skin and fetal lung fibroblasts. Highest expression of CHI3L2 is in chondrocytes, followed by synoviocytes, lung and heart. It is not detected in spleen, pancreas, and liver. CHI3L2 may also be expressed in developing brain and placenta. Increased levels of CHI3L2 have been demonstrated in synovial fluids of patients with rheumatoid or osteoarthritis as well as in some other pathologies and in malignant tumors, particularly in glioblastomas. CHI3L2 may

## For Research Use Only

A Reliable Research Partner in Life Science and Medicine

Toll-free: 1-888-852-8623

Web: [www.elabscience.com](http://www.elabscience.com)

Tel: 1-832-243-6086

Email: [techsupport@elabscience.com](mailto:techsupport@elabscience.com)

Fax: 1-832-243-6017

# Recombinant Human CHI3L2/YKL-39 Protein (His Tag)

Catalog Number: PKSH033718

**DIA • AN**®  
by Elabscience

bind glycan structure with high affinity, but not heparin. It has has no chitotriosidase activity, but is likely to bind some type of glycan.

---

## For Research Use Only

A Reliable Research Partner in Life Science and Medicine

Toll-free: 1-888-852-8623

Tel: 1-832-243-6086

Fax: 1-832-243-6017

Web: [www.elabscience.com](http://www.elabscience.com)

Email: [techsupport@elabscience.com](mailto:techsupport@elabscience.com)