

# IL36A Polyclonal Antibody

Catalog Number:E-AB-18108



**Note:** Centrifuge before opening to ensure complete recovery of vial contents.

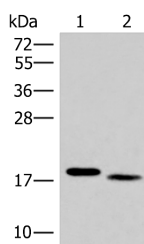
## Description

<b>Reactivity</b>	Human, Mouse
<b>Immunogen</b>	Synthetic peptide of human IL36A
<b>Host</b>	Rabbit
<b>Isotype</b>	IgG
<b>Purification</b>	Antigen affinity purification
<b>Conjugation</b>	Unconjugated
<b>Formulation</b>	PBS with 0.05% NaN <sub>3</sub> and 40% Glycerol,pH7.4

## Applications Recommended Dilution

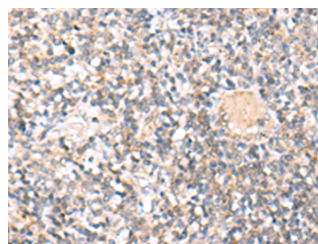
<b>WB</b>	1:500-1:2000
<b>IHC</b>	1:30-1:150
<b>ELISA</b>	1:5000-1:10000

## Data



Western blot analysis of Mouse liver tissue and Human tonsil tissue lysates using IL36A Polyclonal Antibody at dilution of 1:300

**Observed MW:Refer to figures**  
**Calculated Mw:18 kDa**



Immunohistochemistry of paraffin-embedded Human tonsil tissue using IL36A Polyclonal Antibody at dilution of 1:30(×200)

## Preparation & Storage

**Storage** Store at -20°C. Avoid freeze / thaw cycles.

## Background

IL36A (Interleukin 36, Alpha) is a Protein Coding gene. Diseases associated with IL36A include Psoriasis. Among its related pathways are Innate Immune System and Toll-Like receptor Signaling Pathways. GO annotations related to this gene include cytokine activity and interleukin-1 receptor binding. An important paralog of this gene is IL36G. The protein encoded by this gene is a cytokine that can activate NF-kappa-B and MAPK signaling pathways to generate an inflammatory response. The encoded protein functions primarily in skin and demonstrates increased expression in psoriasis. In addition, decreased expression of this gene has been linked to a poor prognosis in both hepatocellular carcinoma and colorectal cancer patients.

## For Research Use Only

A Reliable Research Partner in Life Science and Medicine

Toll-free: 1-888-852-8623

Web: [www.elabscience.com](http://www.elabscience.com)

Tel: 1-832-243-6086

Email: [techsupport@elabscience.com](mailto:techsupport@elabscience.com)

Fax: 1-832-243-6017