

# Recombinant Human AMY1A Protein(His Tag)

Catalog Number: PDMH100164



**Note:** Centrifuge before opening to ensure complete recovery of vial contents.

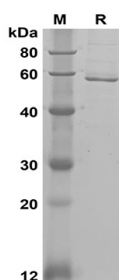
## Description

|                     |   |
|---------------------|---|
| <b>Species</b>      | Human   |
| <b>Source</b>       | Mammalian-derived Human AMY1A protein Met1-Leu511, with an C-terminal His |
| <b>Mol_Mass</b>     | 56.1 kDa  |
| <b>Accession</b>    | P0DUB6  |
| <b>Bio-activity</b> | Not validated for activity  |

## Properties

|                       |  |
|-----------------------|--|
| <b>Purity</b>         | > 95% as determined by reducing SDS-PAGE.  |
| <b>Endotoxin</b>      | < 1.0 EU/mg of the protein as determined by the LAL method   |
| <b>Storage</b>        | Generally, lyophilized proteins are stable for up to 12 months when stored at -20 to -80 °C. Reconstituted protein solution can be stored at 4-8°C for 2-7 days. Aliquots of reconstituted samples are stable at < -20°C for 3 months. |
| <b>Shipping</b>       | This product is provided as lyophilized powder which is shipped with ice packs.  |
| <b>Formulation</b>    | Lyophilized from a 0.2 µm filtered solution in PBS with 5% Trehalose and 5% Mannitol.  |
| <b>Reconstitution</b> | It is recommended that sterile water be added to the vial to prepare a stock solution of 0.5 mg/mL. Concentration is measured by UV-Vis  |

## Data



SDS-PAGE analysis of Human AMY1A proteins, 2µg/lane of Recombinant Human AMY1A proteins was resolved with SDS-PAGE under reducing conditions, showing bands at 58 kDa

## Background

Calcium-binding enzyme that initiates starch digestion in the oral cavity. Catalyzes the hydrolysis of internal (1→4)-alpha-D-glucosidic bonds, yielding a mixture of maltose, isomaltose, small amounts of glucose as well as small linear and branched oligosaccharides called dextrins.

## For Research Use Only

A Reliable Research Partner in Life Science and Medicine  
Tel:400-999-2100

Email:[techsupport@elabscience.cn](mailto:techsupport@elabscience.cn)

Web:[www.elabscience.cn](http://www.elabscience.cn)

Rev. V1.0