

Recombinant Human GH1/Growth hormone 1 Protein

Catalog Number:PKSH030498



Note: Centrifuge before opening to ensure complete recovery of vial contents.

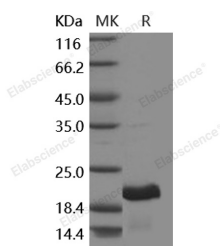
Description

Synonyms	GH;GH-N;GH1;GHB5;GHN;Growth hormone 1;hGH-N;IGHD1B
Species	Human
Expression Host	E.coli
Sequence	Phe27-Phe217
Accession	P01241
Calculated Molecular Weight	22.1 kDa
Tag	None
Bioactivity	Measured by its ability to promote proliferation of INS-1 cells. The ED50 for this effect is 0.2-1 ng/mL.

Properties

Purity	> 90 % as determined by reducing SDS-PAGE.
Endotoxin	Please contact us for more information.
Storage	Generally, lyophilized proteins are stable for up to 12 months when stored at -20 to -80°C. Reconstituted protein solution can be stored at 4-8°C for 2-7 days. Aliquots of reconstituted samples are stable at < -20°C for 3 months.
Shipping	This product is provided as lyophilized powder which is shipped with ice packs.
Formulation	Lyophilized from sterile PBS, pH 7.4 Normally 5 % - 8 % trehalose, mannitol and 0.01 % Tween80 are added as protectants before lyophilization. Please refer to the specific buffer information in the printed manual.
Reconstitution	Please refer to the printed manual for detailed information.

Data



> 90 % as determined by reducing SDS-PAGE.

Background

The protein encoded by this gene is a member of the somatotropin/prolactin family of hormones which play an important role in growth control. The gene; along with four other related genes; is located at the growth hormone locus on chromosome 17 where they are interspersed in the same transcriptional orientation; an arrangement which is thought to have evolved by a series of gene duplications. The five genes share a remarkably high degree of sequence identity. Alternative splicing generates additional isoforms of each of the five growth hormones; leading to further diversity and potential for specialization. This particular family member is expressed in the pituitary but not in placental tissue as is the case for the other four genes in the growth hormone locus. Mutations in or deletions of the gene lead to growth hormone

For Research Use Only

A Reliable Research Partner in Life Science and Medicine

Toll-free: 1-888-852-8623

Web: www.elabscience.com

Tel: 1-832-243-6086

Email: techsupport@elabscience.com

Fax: 1-832-243-6017

Recombinant Human GH1/Growth hormone 1 Protein

Catalog Number:PKSH030498



deficiency and short stature.

For Research Use Only

A Reliable Research Partner in Life Science and Medicine

Toll-free: 1-888-852-8623

Web: www.elabscience.com

Tel: 1-832-243-6086

Email: techsupport@elabscience.com

Fax: 1-832-243-6017