

JAM-A Polyclonal Antibody

catalog number: E-AB-15145

Note: Centrifuge before opening to ensure complete recovery of vial contents.

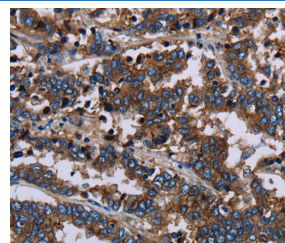
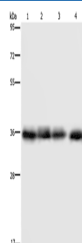
Description

Reactivity	Human
Immunogen	Recombinant protein of human F11R
Host	Rabbit
Isotype	IgG
Purification	Affinity purification
Buffer	Phosphate buffered solution, pH 7.4, containing 0.05% stabilizer and 50% glycerol.

Applications

Applications	Recommended Dilution
WB	1:500-1:2000
IHC	1:50-1:200

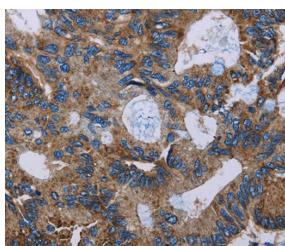
Data



Western Blot analysis of K562 cell and Human kidney cancer tissue, 293T and HepG2 cell using JAM-A Polyclonal Antibody at dilution of 1:600

Immunohistochemistry of paraffin-embedded Human liver cancer using JAM-A Polyclonal Antibody at dilution of 1:60

Calculated-MW:33 kDa



Immunohistochemistry of paraffin-embedded Human colon cancer using JAM-A Polyclonal Antibody at dilution of 1:60

Preparation & Storage

Storage	Store at -20°C Valid for 12 months. Avoid freeze / thaw cycles.
Shipping	The product is shipped with ice pack, upon receipt, store it immediately at the temperature recommended.

Background

For Research Use Only

Tight junctions represent one mode of cell-to-cell adhesion in epithelial or endothelial cell sheets, forming continuous seals around cells and serving as a physical barrier to prevent solutes and water from passing freely through the paracellular space. The protein encoded by this immunoglobulin superfamily gene member is an important regulator of tight junction assembly in epithelia. In addition, the encoded protein can act as a receptor for reovirus, a ligand for the integrin LFA1, involved in leukocyte transmigration, and a platelet receptor. Multiple 5' alternatively spliced variants, encoding the same protein, have been identified but their biological validity has not been established.

For Research Use Only

Toll-free: 1-888-852-8623
Web: www.elabscience.com

Tel: 1-832-243-6086
Email: techsupport@elabscience.com

Fax: 1-832-243-6017

Rev. V1.7