

# Recombinant Thrombospondin 1 Monoclonal Antibody

Catalog Number:E-AB-81612



**Note:** Centrifuge before opening to ensure complete recovery of vial contents.

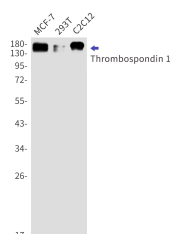
## Description

<b>Reactivity</b>	Human,Mouse
<b>Immunogen</b>	Recombinant protein of human Thrombospondin 1
<b>Host</b>	Rabbit
<b>Isotype</b>	IgG
<b>Clone</b>	R06-5F3
<b>Purification</b>	Affinity Purified
<b>Conjugation</b>	Unconjugated
<b>Formulation</b>	50mM Tris-Glycine(pH 7.4), 0.15M NaCl, 40% Glycerol, 0.01% Sodium azide and 0.05% protective protein

## Applications Recommended Dilution

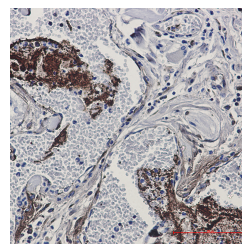
<b>WB</b>	1:500-1:1000
<b>IHC</b>	1:50-1:100

## Data



Western blot detection of Thrombospondin 1 in MCF-7,293T,C2C12 cell lysates using Thrombospondin 1 Rabbit mAb(1:1000 diluted).Predicted band size:130kDa.Observed band size:170kDa.

**Observed Mw:170kDa**  
**Calculated Mw:130kDa**



Immunohistochemistry of Thrombospondin 1 in paraffin-embedded Human Cholangiocarcinoma using Thrombospondin 1 Rabbit mAb at dilution 1:50

## Preparation & Storage

**Storage** Store at -20°C. Avoid freeze / thaw cycles.

## Background

The protein encoded by this gene is a subunit of a disulfide-linked homotrimeric protein. This protein is an adhesive glycoprotein that mediates cell-to-cell and cell-to-matrix interactions. This protein can bind to fibrinogen, fibronectin, laminin, type V collagen and integrins alpha-V/beta-1. This protein has been shown to play roles in platelet aggregation, angiogenesis, and tumorigenesis.

## For Research Use Only

A Reliable Research Partner in Life Science and Medicine

Toll-free: 1-888-852-8623

Web: [www.elabscience.com](http://www.elabscience.com)

Tel: 1-832-243-6086

Email: [techsupport@elabscience.com](mailto:techsupport@elabscience.com)

Fax: 1-832-243-6017