

## HSP60 Polyclonal Antibody

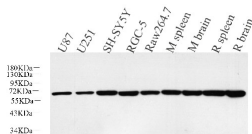
catalog number: E-AB-70103

**Note:** Centrifuge before opening to ensure complete recovery of vial contents.

Description	
Reactivity	Human;Mouse;Rat
Immunogen	KLH conjugated Synthetic peptide corresponding to Mouse HSP60
Host	Rabbit
Isotype	IgG
Purification	Affinity purification
Conjugation	Unconjugated
Buffer	Phosphate buffered solution, pH 7.4, containing 0.05% stabilizer, 1% protein protectant and 50% glycerol.

Applications	Recommended Dilution
WB	1:2000-1:5000
IHC	1:300-1:800

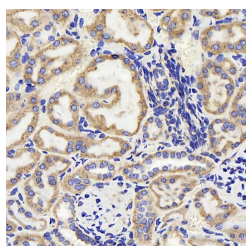
### Data



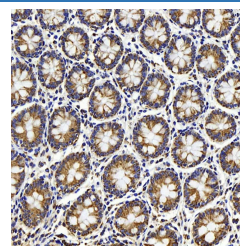
Western Blot analysis of various samples using HSP60 Polyclonal Antibody at dilution of 1:5000.

**Observed-MW:60 kDa**

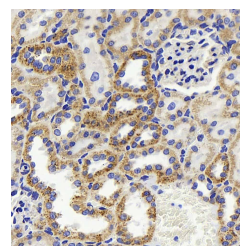
**Calculated-MW:60 kDa**



Immunohistochemistry analysis of paraffin-embedded Mouse kidney using HSP60 Polyclonal Antibody at dilution of 1:500.



Immunohistochemistry analysis of paraffin-embedded human colon using HSP60 Polyclonal Antibody at dilution of 1:500.



Immunohistochemistry analysis of paraffin-embedded rat kidney using HSP60 Polyclonal Antibody at dilution of 1:500.

Preparation & Storage	
Storage	Store at -20°C Valid for 12 months. Avoid freeze / thaw cycles.
Shipping	The product is shipped with ice pack,upon receipt,store it immediately at the temperature recommended.

### Background

### For Research Use Only

HSPD1, also known as HSP60, belongs to the chaperonin family and acts as a chaperone to enhance cell survival under physiological stresses. Hsp60 has been shown to be connected with many aspects of cell functions such as protein folding and assembling of polypeptide chains in mitochondria. Recently it has been reported that HSP60 is associated with apoptosis or inhibition of cancer cell growth. (21822415)