

# Recombinant Human GADD45A/DDIT-1 Protein (His Tag)

Catalog Number: PKSH033661



**Note:** Centrifuge before opening to ensure complete recovery of vial contents.

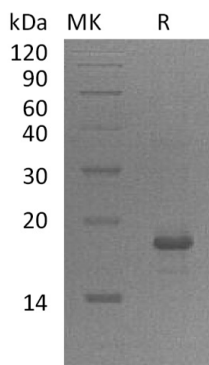
## Description

<b>Species</b>	Human
<b>Mol_Mass</b>	20.5 kDa
<b>Accession</b>	P24522
<b>Bio-activity</b>	Not validated for activity

## Properties

<b>Purity</b>	> 95 % as determined by reducing SDS-PAGE.
<b>Endotoxin</b>	< 1.0 EU per µg of the protein as determined by the LAL method.
<b>Storage</b>	Generally, lyophilized proteins are stable for up to 12 months when stored at -20 to -80 °C. Reconstituted protein solution can be stored at 4-8°C for 2-7 days. Aliquots of reconstituted samples are stable at < -20°C for 3 months.
<b>Shipping</b>	This product is provided as lyophilized powder which is shipped with ice packs.
<b>Formulation</b>	Lyophilized from a 0.2 µm filtered solution of PBS, pH 7.4. Normally 5% - 8% trehalose, mannitol and 0.01% Tween 80 are added as protectants before lyophilization. Please refer to the specific buffer information in the printed manual.
<b>Reconstitution</b>	Please refer to the printed manual for detailed information.

## Data



> 95 % as determined by reducing SDS-PAGE.

## Background

Growth Arrest and DNA Damage-Inducible Protein GADD45  $\alpha$  (GADD45A) is a member of the GADD45 family. GADD45A can be induced by UV irradiation; X-rays; growth arrest and alkylating agents; of which can be mediated by some kinases other than PKC. GADD45A can interact with MAPK14; GADD45GIP1; PCNA. In T-cells; GADD45A functions as a regulator of p38 MAPKs by inhibiting p88 phosphorylation and activity. GADD45A may affect PCNA interaction with some cell division protein kinase complexes; stimulating DNA excision repair in vitro and inhibits entry of cells into S phase.

## For Research Use Only

A Reliable Research Partner in Life Science and Medicine  
Tel:400-999-2100

Email:[techsupport@elabscience.cn](mailto:techsupport@elabscience.cn)

Web:[www.elabscience.cn](http://www.elabscience.cn)

Rev. V3.2