

Recombinant Phospho-Tau (Ser396) Monoclonal Antibody

catalog number: **AN301134L**

Note: Centrifuge before opening to ensure complete recovery of vial contents.

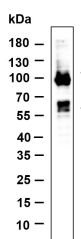
Description

Reactivity	Human;Mouse;Rat
Immunogen	A synthetic peptide corresponding to residues around (Ser396) of Human Phospho-Tau
Host	Rabbit
Isotype	IgG,k
Clone	B889
Purification	Protein A
Buffer	PBS, 50% glycerol, 0.05% Proclin 300, 0.05% protein protectant.

Applications

Applications	Recommended Dilution
IHC	1:200-1:1000
WB	1:2000-1:10000
IF	1:200-1:1000
ELISA	1:5000-1:20000

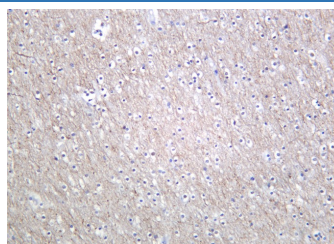
Data



Western Blot with Recombinant Phospho-Tau (Ser396) Monoclonal Antibody at dilution of 1:1000 dilution. Lane A: Neuro-2a.

Observed-MW:55-130 kDa

Calculated-MW:79 kDa



Immunohistochemistry of paraffin-embedded human brain using Recombinant Phospho-Tau (Ser396) Monoclonal Antibody at dilution of 1:200.

Preparation & Storage

Storage	Store at -20°C Valid for 12 months. Avoid freeze / thaw cycles.
Shipping	Ice bag

Background

This gene encodes the microtubule-associated protein tau (MAPT) whose transcript undergoes complex, regulated alternative splicing, giving rise to several mRNA species. MAPT transcripts are differentially expressed in the nervous system, depending on stage of neuronal maturation and neuron type. MAPT gene mutations have been associated with several neurodegenerative disorders such as Alzheimer's disease, Pick's disease, frontotemporal dementia, cortico-basal degeneration and progressive supranuclear palsy.

For Research Use Only