

## PLA2G4D Polyclonal Antibody

**catalog number: E-AB-66466**

**Note:** Centrifuge before opening to ensure complete recovery of vial contents.

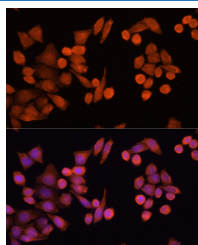
### Description

<b>Reactivity</b>	Human
<b>Immunogen</b>	Recombinant fusion protein of human PLA2G4D (NP_828848.3).
<b>Host</b>	Rabbit
<b>Isotype</b>	IgG
<b>Purification</b>	Affinity purification
<b>Buffer</b>	Phosphate buffered solution, pH 7.4, containing 0.05% stabilizer and 50% glycerol.

### Applications

Applications	Recommended Dilution
IF	1:50-1:200

### Data



Immunofluorescence analysis of Hela cells using PLA2G4D Polyclonal Antibody at dilution of 1:100 (40x lens). Blue: DAPI for nuclear staining.

### Preparation & Storage

<b>Storage</b>	Store at -20°C Valid for 12 months. Avoid freeze / thaw cycles.
<b>Shipping</b>	The product is shipped with ice pack, upon receipt, store it immediately at the temperature recommended.

### Background

PLA2G4D (Phospholipase A2 Group IVD) is a Protein Coding gene. Among its related pathways are Sweet Taste Signaling and Acyl chain remodelling of PE. Gene Ontology (GO) annotations related to this gene include phospholipase A2 activity and phospholipase activity. An important paralog of this gene is JMJD7-PLA2G4B.

### For Research Use Only