

## Recombinant Human LYPLA1 Protein (His Tag)

**Catalog Number:** PKSH032043

**Note:** Centrifuge before opening to ensure complete recovery of vial contents.

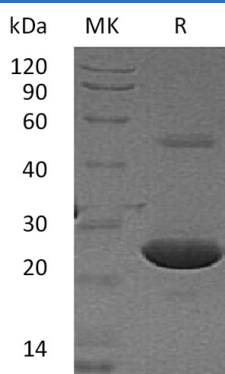
### Description

<b>Species</b>	Human
<b>Source</b>	E.coli-derived Human LYPLA1 protein Met 1-Asp230, with an N-terminal His
<b>Calculated MW</b>	26.8 kDa
<b>Observed MW</b>	25 kDa
<b>Accession</b>	O75608
<b>Bio-activity</b>	Not validated for activity

### Properties

<b>Purity</b>	> 95 % as determined by reducing SDS-PAGE.
<b>Concentration</b>	Subject to label value.
<b>Endotoxin</b>	< 1.0 EU per µg of the protein as determined by the LAL method.
<b>Storage</b>	Store at < -20°C, stable for 6 months. Please minimize freeze-thaw cycles.
<b>Shipping</b>	This product is provided as liquid. It is shipped at frozen temperature with blue ice/gel packs. Upon receipt, store it immediately at < -20°C.
<b>Formulation</b>	Supplied as a 0.2 µm filtered solution of 20mM Tris-HCl, 100mM NaCl, 1mM DTT, 10% Glycerol, pH 8.0.

### Data



> 95 % as determined by reducing SDS-PAGE.

### Background

Acyl-Protein Thioesterase 1 (APT-1) is lysophospholipase that belongs to the AB hydrolase 2 family. Lysophospholipases are enzymes that act on biological membranes to regulate the multifunctional lysophospholipids. APT-1 performs on biological membranes to regulate the multifunctional lysophospholipids. It hydrolyzes lysophosphatidylcholine in both monomeric and micellar forms. It hydrolyzes fatty acids from S-acylated cysteine residues in proteins such as trimeric Galpha proteins or HRAS; in addition, it also has depalmitoylating activity and low lysophospholipase activity.

### For Research Use Only

Toll-free: 1-888-852-8623  
Web: [www.elabscience.com](http://www.elabscience.com)

Tel: 1-832-243-6086  
Email: [techsupport@elabscience.com](mailto:techsupport@elabscience.com)

Fax: 1-832-243-6017