

## Recombinant Human IL-23 Protein(Fc Tag)

Catalog Number: PDMH100317

**Note:** Centrifuge before opening to ensure complete recovery of vial contents.

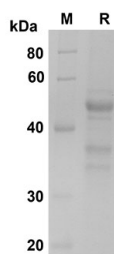
### Description

<b>Species</b>	Human
<b>Source</b>	Mammalian-derived Human IL-23 proteins Arg20-Pro189,with an C-terminal Fc
<b>Calculated MW</b>	43.6 kDa
<b>Observed MW</b>	45 kDa
<b>Accession</b>	Q9NPF7
<b>Bio-activity</b>	Not validated for activity

### Properties

<b>Purity</b>	> 90% as determined by reducing SDS-PAGE.
<b>Endotoxin</b>	< 1.0 EU/mg of the protein as determined by the LAL method
<b>Storage</b>	Generally, lyophilized proteins are stable for up to 12 months when stored at -20 to -80°C. Reconstituted protein solution can be stored at 4-8°C for 2-7 days. Aliquots of reconstituted samples are stable at < -20°C for 3 months.
<b>Shipping</b>	This product is provided as lyophilized powder which is shipped with ice packs.
<b>Formulation</b>	Lyophilized from a 0.2 µm filtered solution in PBS with 5% Trehalose and 5% Mannitol.
<b>Reconstitution</b>	It is recommended that sterile water be added to the vial to prepare a stock solution of 0.5 mg/mL. Concentration is measured by UV-Vis.

### Data



SDS-PAGE analysis of Human IL-23 proteins , 2 µg/lane of Recombinant Human IL-23 proteins was resolved with SDS-PAGE under reducing conditions , showing bands at 45 kDa.

### Background

IL-23 , which is mainly secreted by antigen-presenting cells , is a member of the IL-12 family , which includes IL-12 , IL-27 , and IL-35. IL-23 is a heterodimeric cytokine , comprised of a unique p19 subunit and p4 subunit , the latter of which is shared with IL-12. The receptor for IL-23 consists of IL-23R and IL-12Rβ1 , the latter of which is also characteristic of IL-12. IL-23 is essential for Th17 differentiation , expansion , and survival by binding to its receptor , thereby activating the signaling pathway. Many studies revealed that the IL-23/Th17 pathway is implicated in the pathophysiology of various autoimmune diseases , such as autoimmune arthritis , primary biliary cirrhosis , and inflammatory bowel disease.

### For Research Use Only

Toll-free: 1-888-852-8623  
Web: [www.elabscience.com](http://www.elabscience.com)

Tel: 1-832-243-6086  
Email: [techsupport@elabscience.com](mailto:techsupport@elabscience.com)

Fax: 1-832-243-6017