

Recombinant Human CTLA4 Protein (Flag Tag)

Catalog Number:PKSH032340



Note: Centrifuge before opening to ensure complete recovery of vial contents.

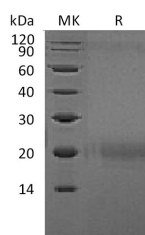
Description

Synonyms	Cytotoxic T-lymphocyte protein 4;Cytotoxic T-lymphocyte-associated antigen 4;CTLA4;CD152;Cytotoxic T-Lymphocyte-Associated Protein 4
Species	Human
Expression Host	HEK293 Cells
Sequence	Lys36-Asp161
Accession	P16410
Calculated Molecular Weight	14.5 kDa
Observed molecular weight	20 kDa
Tag	C-Flag

Properties

Purity	> 95 % as determined by reducing SDS-PAGE.
Endotoxin	< 1.0 EU per µg of the protein as determined by the LAL method.
Storage	Generally, lyophilized proteins are stable for up to 12 months when stored at -20 to -80°C. Reconstituted protein solution can be stored at 4-8°C for 2-7 days. Aliquots of reconstituted samples are stable at < -20°C for 3 months.
Shipping	This product is provided as lyophilized powder which is shipped with ice packs.
Formulation	Lyophilized from a 0.2 µm filtered solution of 20mM PB, 150mM NaCl, pH 7.4. Normally 5 % - 8 % trehalose, mannitol and 0.01% Tween80 are added as protectants before lyophilization. Please refer to the specific buffer information in the printed man
Reconstitution	Please refer to the printed manual for detailed information.

Data



> 95 % as determined by reducing SDS-PAGE.

Background

Cytotoxic Tlymphocyte 4(CTLA-4;CD152); is a type I transmembrane T cell inhibitory molecule that is a member of the Ig superfamily. Human or mouse CTLA4 cDNA encodes 223 amino acids (aa) including a 35 aa signal sequence; a 126 aa extracellular domain (ECD) with one Ig-like V-type domain; a 21 aa transmembrane (TM) sequence; and a 41 aa cytoplasmic sequence. It is widely expressed with highest levels in lymphoid tissues. CD28 and CTLA-4; together with their ligands; B7-1 and B7-2; constitute one of the dominant costimulatory pathways that regulate T and B cell responses. CD28 and CTLA-4 are structurally homologous molecules that are members of the immunoglobulin (Ig) gene superfamily. CTLA4 transmits an inhibitory signal to T cells; whereas CD28 transmits a stimulatory signal. Intracellular

For Research Use Only

A Reliable Research Partner in Life Science and Medicine

Toll-free: 1-888-852-8623

Web: www.elabscience.com

Tel: 1-832-243-6086

Email: techsupport@elabscience.com

Fax: 1-832-243-6017

Recombinant Human CTLA4 Protein (Flag Tag)

Catalog Number: PKSH032340



CTLA4 is also found in regulatory T Cells and may play an important role in their functions. Tcell activation through the Tcell receptor and CD28 leads to increased expression of CTLA4.

For Research Use Only

A Reliable Research Partner in Life Science and Medicine

Toll-free: 1-888-852-8623

Web: www.elabscience.com

Tel: 1-832-243-6086

Email: techsupport@elabscience.com

Fax: 1-832-243-6017