

## Recombinant Collagen III Monoclonal Antibody

catalog number: **AN301094L**

**Note:** Centrifuge before opening to ensure complete recovery of vial contents.

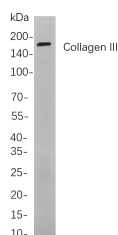
### Description

<b>Reactivity</b>	Human;Mouse;Rat
<b>Immunogen</b>	Recombinant Human Collagen III protein
<b>Host</b>	Rabbit
<b>Isotype</b>	IgG, $\kappa$
<b>Clone</b>	B849
<b>Purification</b>	Protein A
<b>Buffer</b>	PBS, 50% glycerol, 0.05% Proclin 300, 0.05% protein protectant.

### Applications

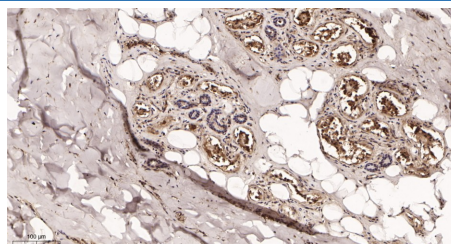
Applications	Recommended Dilution
IHC	1:20-100
WB	1:1000-5000
IF	1:200-1000
ELISA	1:5000-20000
IP	1:50-200

### Data

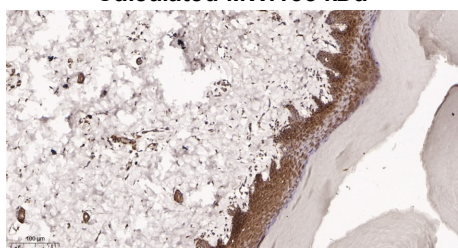


Western Blot with Recombinant Collagen III Monoclonal Antibody at dilution of 1:1000 dilution. Lane A: Rat womb cells.

**Observed-MW:150 kDa**  
**Calculated-MW:138 kDa**



Immunohistochemistry of paraffin-embedded human skin tissue using Recombinant Collagen III Monoclonal Antibody at dilution of 1:200.



Immunohistochemistry of paraffin-embedded rat skin tissue using Recombinant Collagen III Monoclonal Antibody at dilution of 1:200.

### Preparation & Storage

<b>Storage</b>	Store at -20°C Valid for 12 months. Avoid freeze / thaw cycles.
<b>Shipping</b>	Ice bag

### Background

#### For Research Use Only

Toll-free: 1-888-852-8623  
Web: [www.elabscience.com](http://www.elabscience.com)

Tel: 1-832-243-6086  
Email: [techsupport@elabscience.com](mailto:techsupport@elabscience.com)

Fax: 1-832-243-6017

Rev. V1.2

Collagen type III alpha 1 chain(COL3A1) Homo sapiens This gene encodes the pro-alpha1 chains of type III collagen, a fibrillar collagen that is found in extensible connective tissues such as skin, lung, uterus, intestine and the vascular system, frequently in association with type I collagen. Mutations in this gene are associated with Ehlers-Danlos syndrome types IV, and with aortic and arterial aneurysms. Two transcripts, resulting from the use of alternate polyadenylation signals, have been identified for this gene.