

YWHAG Polyclonal Antibody

Catalog Number: E-AB-12587



Note: Centrifuge before opening to ensure complete recovery of vial contents.

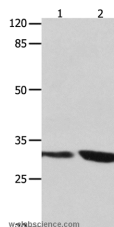
Description

Reactivity	Human, Mouse, Rat
Immunogen	Synthetic peptide of human YWHAG
Host	Rabbit
Isotype	IgG
Purification	Affinity purification
Conjugation	Unconjugated
Formulation	PBS with 0.05% sodium azide and 50% glycerol, PH7.4

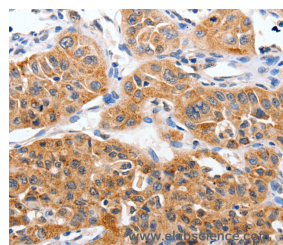
Applications Recommended Dilution

WB	1:1000-1:5000
IHC	1:50-1:200

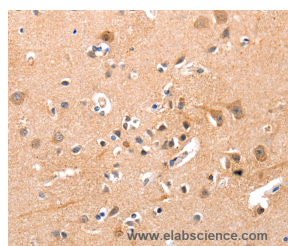
Data



Western Blot analysis of 293T and Jurkat cell using YWHAG Polyclonal Antibody at dilution of 1:800
Calculated Mw: 28kDa



Immunohistochemistry of paraffin-embedded Human lung cancer using YWHAG Polyclonal Antibody at dilution of 1:50



Immunohistochemistry of paraffin-embedded Human brain using YWHAG Polyclonal Antibody at dilution of 1:50

Preparation & Storage

Storage Store at -20°C. Avoid freeze / thaw cycles.

Background

This gene product belongs to the 14-3-3 family of proteins which mediate signal transduction by binding to phosphoserine-containing proteins. This highly conserved protein family is found in both plants and mammals, and this protein is 100% identical to the rat ortholog. It is induced by growth factors in human vascular smooth muscle cells, and is also highly expressed in skeletal and heart muscles, suggesting an important role for this protein in muscle tissue. It has been shown to

For Research Use Only

A Reliable Research Partner in Life Science and Medicine

Toll-free: 1-888-852-8623

Web: www.elabscience.com

Tel: 1-832-243-6086

Email: techsupport@elabscience.com

Fax: 1-832-243-6017

YWHAG Polyclonal Antibody

Catalog Number: E-AB-12587



interact with RAF1 and protein kinase C, proteins involved in various signal transduction pathways.

For Research Use Only

A Reliable Research Partner in Life Science and Medicine

Toll-free: 1-888-852-8623

Tel: 1-832-243-6086

Fax: 1-832-243-6017

Web: www.elabscience.com

Email: techsupport@elabscience.com