

## Recombinant BOB-1 Monoclonal Antibody

catalog number: **AN301449L**

**Note:** Centrifuge before opening to ensure complete recovery of vial contents.

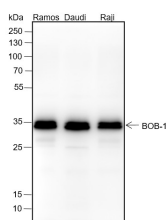
### Description

<b>Reactivity</b>	Human;
<b>Immunogen</b>	Recombinant human BOB-1 fragment
<b>Host</b>	Rabbit
<b>Isotype</b>	IgG, $\kappa$
<b>Clone</b>	A144
<b>Purification</b>	Protein A purified
<b>Buffer</b>	PBS, 50% glycerol, 0.05% Proclin 300, 0.05% protein protectant.

### Applications

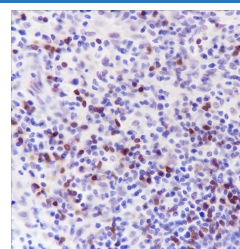
Applications	Recommended Dilution
<b>WB</b>	1:500-1:2000
<b>IHC</b>	1:200-1:1000

### Data



Western Blot with BOB-1 Monoclonal Antibody at dilution of 1:2000. Lane 1: Ramos, Lane 2: Daudi, Lane 3: Raji

**Observed-MW:35 kDa**  
**Calculated-MW:27 kDa**



Immunohistochemistry of paraffin-embedded Human lymphoma using BOB-1 Monoclonal Antibody at dilution of 1:1000.

### Preparation & Storage

<b>Storage</b>	Store at -20°C Valid for 12 months. Avoid freeze / thaw cycles.
<b>Shipping</b>	Ice bag

### Background

Transcriptional coactivator that specifically associates with either POU2F1/OCT1 or POU2F2/OCT2. It boosts the POU2F1/OCT1 mediated promoter activity and to a lesser extent, that of POU2F2/OCT2. It has no intrinsic DNA-binding activity. It recognizes the POU domains of POU2F1/OCT1 and POU2F2/OCT2. It is essential for the response of B-cells to antigens and required for the formation of germinal centers. Regulates IL6 expression in B cells as POU2F2/OCT2 coactivator.

### For Research Use Only

Toll-free: 1-888-852-8623  
Web: [www.elabscience.com](http://www.elabscience.com)

Tel: 1-832-243-6086  
Email: [techsupport@elabscience.com](mailto:techsupport@elabscience.com)

Fax: 1-832-243-6017

Rev. V1.0