

Recombinant Mouse CD30 Protein(Fc Tag)

Catalog Number: PDMM100075

Note: Centrifuge before opening to ensure complete recovery of vial contents.

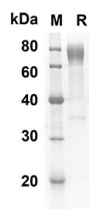
Description

Species	Mouse
Source	Mammalian-derived Mouse CD30 proteins Phe19-Thr281, C-terminal Fc
Calculated MW	53.8 kDa
Observed MW	60-80 kDa
Accession	Q60846
Bio-activity	Not validated for activity

Properties

Purity	> 90% as determined by reducing SDS-PAGE.
Endotoxin	< 1.0 EU/mg of the protein as determined by the LAL method
Storage	Generally, lyophilized proteins are stable for up to 12 months when stored at -20 to -80 °C. Reconstituted protein solution can be stored at 4-8°C for 2-7 days. Aliquots of reconstituted samples are stable at < -20°C for 3 months.
Shipping	This product is provided as lyophilized powder which is shipped with ice packs.
Formulation	Lyophilized from a 0.2 µm filtered solution in PBS with 5% Trehalose and 5% Mannitol.
Reconstitution	It is recommended that sterile water be added to the vial to prepare a stock solution of 0.5 mg/mL. Concentration is measured by UV-Vis.

Data



SDS-PAGE analysis of Mouse CD30 proteins, 2 µg/lane of Recombinant Mouse CD30 proteins was resolved with SDS-PAGE under reducing conditions, showing bands at 53.8 KD

Background

CD30, also known as TNFRSF8, is a cell membrane protein of the tumor necrosis factor receptor family, which regulates proliferation/apoptosis and antibody responses. CD30 is expressed by activated, but not by resting, T and B cells. Aberrant expression of CD30 by mastocytosis mast cells and interaction with its ligand CD30L (CD153) appears to play an important role in the pathogenesis and clinical presentation of systemic mastocytosis. CD30 has been considered as a specific diagnostic biomarker of anaplastic large cell lymphoma (ALCL) and classical Hodgkin lymphoma (cHL). CD30 is also a biomarker used for targeted therapy by an antibody–drug conjugate. Soluble CD30 retains the ability to bind CD30 Ligand and functions as an inhibitor of normal CD30 signaling.

For Research Use Only