

Recombinant Human TIGIT Protein (mFc Tag)

Catalog Number: PKSH033513

Note: Centrifuge before opening to ensure complete recovery of vial contents.

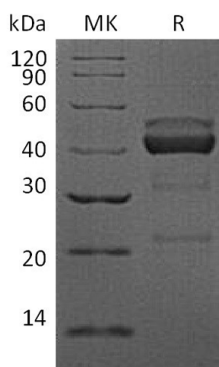
Description

Species	Human
Source	HEK293 Cells-derived Human TIGIT protein Met22-Pro 141, with an C-terminal mFc
Calculated MW	39.7 kDa
Observed MW	40-50 kDa
Accession	Q495A1
Bio-activity	Not validated for activity

Properties

Purity	> 95 % as determined by reducing SDS-PAGE.
Endotoxin	< 1.0 EU per µg of the protein as determined by the LAL method.
Storage	Generally, lyophilized proteins are stable for up to 12 months when stored at -20 to -80 °C. Reconstituted protein solution can be stored at 4-8°C for 2-7 days. Aliquots of reconstituted samples are stable at < -20°C for 3 months.
Shipping	This product is provided as lyophilized powder which is shipped with ice packs.
Formulation	Lyophilized from a 0.2 µm filtered solution of PBS, pH 7.4. Normally 5% - 8% trehalose, mannitol and 0.01% Tween 80 are added as protectants before lyophilization. Please refer to the specific buffer information in the printed manual.
Reconstitution	Please refer to the printed manual for detailed information.

Data



> 95 % as determined by reducing SDS-PAGE.

Background

T cell immunoreceptor with Ig and ITIM domains (TIGIT) is a member of the CD28 family within the Ig superfamily of proteins. TIGIT is expressed on NK cells and subsets of activated; memory and regulatory T cells; and particularly on follicular helper T cells within secondary lymphoid organs. It binds to CD155 and Nectin-2 that appear on dendritic cells (DC) and endothelium. Ligation of TIGIT on T cells down-regulates TCR-mediated activation and subsequent proliferation; while NK cell TIGIT ligation blocks NK cell cytotoxicity. Through CD155 and Nectin-2; which also interact with DNAM-1/CD226 and CD96/Tactile; TIGIT is part of an interacting network of Ig superfamily members that may augment or oppose each other. In particular; TIGIT binding to CD155 can antagonize the effects of DNAM1.

For Research Use Only