

## PLIN3 Polyclonal Antibody

**catalog number: E-AB-17095**

**Note:** Centrifuge before opening to ensure complete recovery of vial contents.

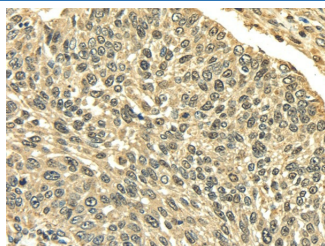
### Description

<b>Reactivity</b>	Human
<b>Immunogen</b>	Fusion protein of human PLIN3
<b>Host</b>	Rabbit
<b>Isotype</b>	IgG
<b>Purification</b>	Affinity purification
<b>Buffer</b>	Phosphate buffered solution, pH 7.4, containing 0.05% stabilizer and 50% glycerol.

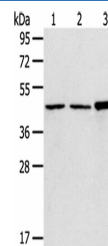
### Applications Recommended Dilution

<b>WB</b>	1:500-2000
<b>IHC</b>	1:25-100

### Data



Immunohistochemistry of paraffin-embedded Human lung cancer using PLIN3 Polyclonal Antibody at dilution of 1/35



Western Blot analysis of 293T, 231 and Hela cells using PLIN3 Polyclonal Antibody at dilution of 1/800

**Calculated-MV:47 kDa**

### Preparation & Storage

<b>Storage</b>	Store at -20°C Valid for 12 months. Avoid freeze / thaw cycles.
<b>Shipping</b>	The product is shipped with ice pack, upon receipt, store it immediately at the temperature recommended.

### Background

Mannose 6-phosphate receptors (MPRs) deliver lysosomal hydrolase from the Golgi to endosomes and then return to the Golgi complex. The protein encoded by this gene interacts with the cytoplasmic domains of both cation-independent and cation-dependent MPRs, and is required for endosome-to-Golgi transport.

### For Research Use Only