

## Elab Fluor® Violet 610 Anti-Human CD4 Antibody[RPA-T4]

**Catalog Number:** E-AB-F1109T

**Note:** Centrifuge before opening to ensure complete recovery of vial contents.

### Description

<b>Reactivity</b>	Human
<b>Host</b>	Mouse
<b>Isotype</b>	Mouse IgG1, κ
<b>Clone No.</b>	RPA-T4
<b>Isotype Control</b>	Elab Fluor® Violet 610 Mouse IgG1, κ Isotype Control[MOPC-21] [Product E-AB-F09792T]
<b>Conjugation</b>	Elab Fluor® Violet 610
<b>Conjugation Information</b>	Elab Fluor® Violet 610 is designed to be excited by the violet laser (405 nm) and detected using an optical filter centered near 613 nm (e.g., a 615/20 nm bandpass filter).
<b>Storage Buffer</b>	Phosphate buffered solution, pH 7.2, containing 0.09% stabilizer and 1% protein protectant.

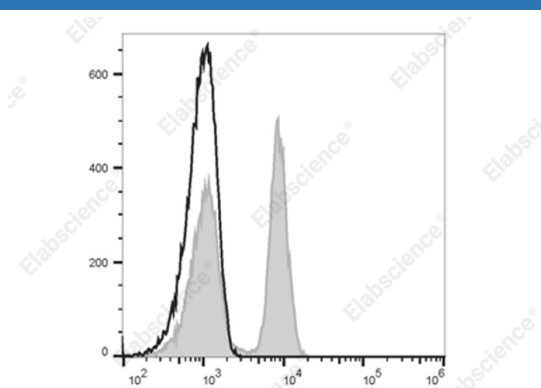
### Applications

### Recommended usage

#### FCM

Each lot of this antibody is quality control tested by flow cytometric analysis. **The amount of the reagent is suggested to be used 5 µL of antibody per test (million cells in 100 µL staining volume or per 100 µL of whole blood).** Please check your vial before the experiment. Since applications vary, the appropriate dilutions must be determined for individual use.

### Data



Staining of normal human peripheral blood cells with Elab Fluor® Violet 610 Anti-Human CD4 Antibody[RPA-T4] (filled gray histogram) or Elab Fluor® Violet 610 Mouse IgG1, κ Isotype Control (empty black histogram). Cells in the lymphocytes gate were used for analysis.

### Preparation & Storage

<b>Storage</b>	Keep as concentrated solution. This product can be stored at 2-8°C for 12 months. Please protected from prolonged exposure to light and do not freeze.
<b>Shipping</b>	Ice bag

### Antigen Information

<b>Alternate Names</b>	CD4;T-cell surface antigen T4/Leu-3;T-cell surface glycoprotein CD4
<b>Uniprot ID</b>	P01730

### For Research Use Only

**Gene ID**

920

**Background**

CD4, also known as T4/Leu-3, is a 55 kD single-chain type I transmembrane glycoprotein and member of the immunoglobulin superfamily. It is expressed on most thymocytes, helper T cells, type II NKT cells, and monocytes/macrophages. CD4 is part of the TCR/CD3 complex, binds to  $\beta 2$  domain from the MHC class II molecule, and participates in TCR signal transduction. CD4 is the receptor of IL-16 and is a coreceptor for the human immunodeficiency virus (HIV) and human herpes virus 7 (HHV-7).

**For Research Use Only**

Toll-free: 1-888-852-8623  
Web: [www.elabscience.com](http://www.elabscience.com)

Tel: 1-832-243-6086  
Email: [techsupport@elabscience.com](mailto:techsupport@elabscience.com)

Fax: 1-832-243-6017

Rev. V1.9