

# Recombinant Mouse SerpinD1/HCF2 Protein (His Tag)



Catalog Number:PKSM041140

**Note:** Centrifuge before opening to ensure complete recovery of vial contents.

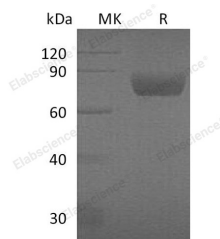
## Description

<b>Synonyms</b>	Heparin cofactor 2;Heparin cofactor II;HC-II;Protease inhibitor leuserpin-2;Serpin D1
<b>Species</b>	Mouse
<b>Expression Host</b>	HEK293 Cells
<b>Sequence</b>	Glu24-Ser478
<b>Accession</b>	P49182
<b>Calculated Molecular Weight</b>	53.1 kDa
<b>Observed molecular weight</b>	70-90 kDa
<b>Tag</b>	C-His

## Properties

<b>Purity</b>	> 95 % as determined by reducing SDS-PAGE.
<b>Endotoxin</b>	< 1.0 EU per µg of the protein as determined by the LAL method.
<b>Storage</b>	Generally, lyophilized proteins are stable for up to 12 months when stored at -20 to -80°C. Reconstituted protein solution can be stored at 4-8°C for 2-7 days. Aliquots of reconstituted samples are stable at < -20°C for 3 months.
<b>Shipping</b>	This product is provided as lyophilized powder which is shipped with ice packs.
<b>Formulation</b>	Lyophilized from a 0.2 µm filtered solution of 50mM Tris-HCl, 150mM NaCl, 5% Mannitol, 0.06% Tween80, pH8.0. Normally 5 % - 8 % trehalose, mannitol and 0.01% Tween80 are added as protectants before lyophilization. Please refer to the specific buff
<b>Reconstitution</b>	Please refer to the printed manual for detailed information.

## Data



> 95 % as determined by reducing SDS-PAGE.

## Background

SerpinD1, also known as heparin cofactor II(HC-II), is a member of Serpin superfamily of the serine proteinase inhibitors. It is a single chain glycoprotein with a size of 66.5 kDa and is secreted from hepatocytes. HC-II acts as a thrombin inhibitor in the coagulation cascade, in a glycosaminoglycan-dependent pathway using the release of a sequestered hirudin-like N-terminal tail for interaction with thrombin. This serpin belongs to multiple member group V2 of vertebrate serpin classification. It has been suggested that HC-II is a predictor of decreased atherosclerosis in the elderly and protective against atherosclerosis in mice. HCII can used as a predictive biomarker and therapeutic target for

## For Research Use Only

A Reliable Research Partner in Life Science and Medicine

Toll-free: 1-888-852-8623

Tel: 1-832-243-6086

Fax: 1-832-243-6017

Web: [www.elabscience.com](http://www.elabscience.com)

Email: [techsupport@elabscience.com](mailto:techsupport@elabscience.com)

# Recombinant Mouse SerpinD1/HCF2 Protein (His Tag)

Catalog Number: PKSM041140

**DIA • AN**®  
by Elabscience

---

atherosclerosis.

---

## For Research Use Only

A Reliable Research Partner in Life Science and Medicine

Toll-free: 1-888-852-8623

Tel: 1-832-243-6086

Fax: 1-832-243-6017

Web: [www.elabscience.com](http://www.elabscience.com)

Email: [techsupport@elabscience.com](mailto:techsupport@elabscience.com)