

GDF-8 Polyclonal Antibody

catalog number: D-AB-10385L

Note: Centrifuge before opening to ensure complete recovery of vial contents.

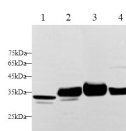
Description

Reactivity	Human;Mouse;Rat
Immunogen	Recombinant Human GDF-8 Protein expressed by E.coli
Host	Rabbit
Isotype	IgG
Purification	Antigen Affinity Purification
Buffer	PBS with 0.05% Proclin300, 1% protective protein and 50% glycerol, pH7.4

Applications

Applications	Recommended Dilution
WB	1:500-1:1000

Data



Western blot with GDF-8 Polyclonal antibody at dilution of 1:1000. lane 1: Hela whole cell lysate, lane 2: Mouse heart, lane 3: Rat heart, lane 4: Rat skeletal muscle

Observed-MW: 35 kDa-43 kDa

Calculated-MW: 43 kDa

Preparation & Storage

Storage	Store at -20°C Valid for 12 months. Avoid freeze / thaw cycles.
Shipping	The product is shipped with ice pack, upon receipt, store it immediately at the temperature recommended.

Background

Growth/differentiation factor 8 (Mstn, GDF-8) is a member of the bone morphogenetic protein (BMP) family and the TGF-beta superfamily. This group of proteins is characterized by a polybasic proteolytic processing site which is cleaved to produce a mature protein containing seven conserved cysteine residues. It is expressed specifically in developing and adult skeletal muscle. It exists as a homodimer, and interacts with WIFKKN2, leading to inhibit its activity. This protein can act specifically as a negative regulator of skeletal muscle growth. It regulates cell growth and differentiation in both embryonic and adult tissues.

For Research Use Only