

## Recombinant Mouse SerpinD1/HCF2 Protein (His Tag)

**Catalog Number:** PKSM041140

**Note:** Centrifuge before opening to ensure complete recovery of vial contents.

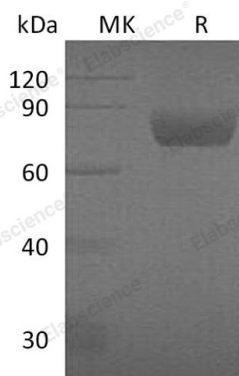
### Description

<b>Species</b>	Mouse
<b>Source</b>	HEK293 Cells-derived Mouse SerpinD1/HCF2 protein Glu24-Ser478, with an C-terminal His
<b>Calculated MW</b>	53.1 kDa
<b>Observed MW</b>	70-90 kDa
<b>Accession</b>	P49182
<b>Bio-activity</b>	Not validated for activity

### Properties

<b>Purity</b>	> 95 % as determined by reducing SDS-PAGE.
<b>Endotoxin</b>	< 1.0 EU per µg of the protein as determined by the LAL method.
<b>Storage</b>	Generally, lyophilized proteins are stable for up to 12 months when stored at -20 to -80°C. Reconstituted protein solution can be stored at 4-8°C for 2-7 days. Aliquots of reconstituted samples are stable at < -20°C for 3 months.
<b>Shipping</b>	This product is provided as lyophilized powder which is shipped with ice packs.
<b>Formulation</b>	Lyophilized from a 0.2 µm filtered solution of 50mM Tris-HCl, 150mM NaCl, 5% Mannitol, 0.06% Tween 80, pH8.0. Normally 5% - 8% trehalose, mannitol and 0.01% Tween 80 are added as protectants before lyophilization. Please refer to the specific buffer information in the printed manual.
<b>Reconstitution</b>	Please refer to the printed manual for detailed information.

### Data



> 95 % as determined by reducing SDS-PAGE.

### Background

SerpinD1, also known as heparin cofactor II(HC-II), is a member of Serpin superfamily of the serine proteinase inhibitors. It is a single chain glycoprotein with a size of 66.5 kDa and is secreted from hepatocytes. HC-II acts as a thrombin inhibitor in the coagulation cascade, in a glycosaminoglycan-dependent pathway using the release of a sequestered hirudin-like N-terminal tail for interaction with thrombin. This serpin belongs to multiple member group V2 of vertebrate serpin classification. It has been suggested that HC-II is a predictor of decreased atherosclerosis in the elderly and protective against atherosclerosis in mice. HCII can used as a predictive biomarker and therapeutic target for atherosclerosis.

### For Research Use Only

Toll-free: 1-888-852-8623  
Web: [www.elabscience.com](http://www.elabscience.com)

Tel: 1-832-243-6086  
Email: [techsupport@elabscience.com](mailto:techsupport@elabscience.com)

Fax: 1-832-243-6017