

PERK Polyclonal Antibody

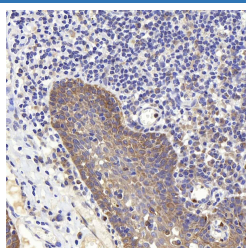
catalog number: E-AB-70363

Note: Centrifuge before opening to ensure complete recovery of vial contents.

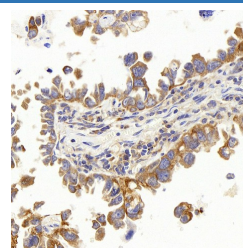
Description	
Reactivity	Human
Immunogen	KLH conjugated Synthetic peptide corresponding to Human PERK
Host	Rabbit
Isotype	IgG
Purification	Affinity purification
Conjugation	Unconjugated
Buffer	Phosphate buffered solution, pH 7.4, containing 0.05% stabilizer, 1% protein protectant and 50% glycerol.

Applications	Recommended Dilution
IHC	1:400-1000

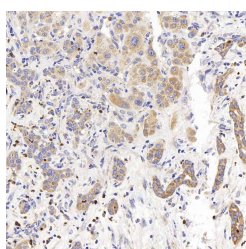
Data



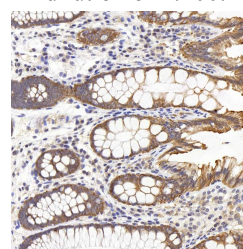
Immunohistochemistry analysis of paraffin-embedded human tonsil using PERK Polyclonal Antibody at dilution of 1:400.



Immunohistochemistry analysis of paraffin-embedded human lung cancer using PERK Polyclonal Antibody at dilution of 1:400.



Immunohistochemistry analysis of paraffin-embedded human liver cancer using PERK Polyclonal Antibody at dilution of 1:400.



Immunohistochemistry analysis of paraffin-embedded human colon using PERK Polyclonal Antibody at dilution of 1:500.

Preparation & Storage	
Storage	Store at -20°C Valid for 12 months. Avoid freeze / thaw cycles.
Shipping	The product is shipped with ice pack, upon receipt, store it immediately at the temperature recommended.

Background	
<p>The protein encoded by this gene phosphorylates the alpha subunit of eukaryotic translation-initiation factor 2 (EIF2), leading to its inactivation, and thus to a rapid reduction of translational initiation and repression of global protein synthesis. It is a type I membrane protein located in the endoplasmic reticulum (ER), where it is induced by ER stress caused by misfolded proteins. Mutations in this gene are associated with Wolcott-Rallison syndrome.</p>	

For Research Use Only