

# METTL17 Polyclonal Antibody

catalog number: E-AB-17937

**Note:** Centrifuge before opening to ensure complete recovery of vial contents.

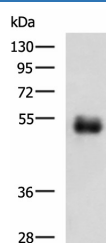
## Description

<b>Reactivity</b>	Human;Mouse
<b>Immunogen</b>	Synthetic peptide of human METTL17
<b>Host</b>	Rabbit
<b>Isotype</b>	IgG
<b>Purification</b>	Antigen affinity purification
<b>Conjugation</b>	Unconjugated
<b>buffer</b>	Phosphate buffered solution, pH 7.4, containing 0.05% stabilizer and 50% glycerol.

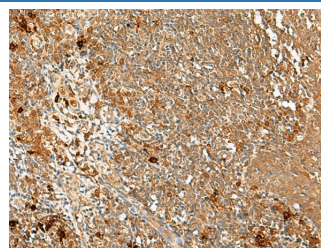
## Applications

Applications	Recommended Dilution
<b>WB</b>	1:500-1:2000
<b>IHC</b>	1:50-1:300

## Data



Western blot analysis of Human colorectal cancer tissue lysate using METTL17 Polyclonal Antibody at dilution of 1:700



Immunohistochemistry of paraffin-embedded Human tonsil tissue using METTL17 Polyclonal Antibody at dilution of 1:60(×200)

**Observed-MV:Refer to figures**

**Calculated-MV:51 kDa**

## Preparation & Storage

<b>Storage</b>	Store at -20°C Valid for 12 months. Avoid freeze / thaw cycles.
<b>Shipping</b>	The product is shipped with ice pack,upon receipt,store it immediately at the temperature recommended.

## Background

May be a component of the mitochondrial small ribosomal subunit.

## For Research Use Only