

Recombinant Rat CGA protein (His tag)

Catalog Number: PDER100088



Note: Centrifuge before opening to ensure complete recovery of vial contents.

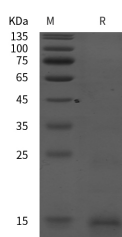
Description

Synonyms	Glycoprotein hormones alpha chain;Cga;Anterior pituitary glycoprotein hormones common subunit alpha;Follicle-stimulating hormone alpha chain (FSH-alpha);Follitropin alpha chain;Luteinizing hormone alpha chain (LSH-alpha);Lutropin alpha chain
Species	Rat
Expression Host	E.coli
Sequence	Leu 25-Ser 120
Accession	P11962
Calculated Molecular Weight	10.5 kDa
Observed molecular weight	15 kDa
Tag	N-His

Properties

Purity	> 95 % as determined by reducing SDS-PAGE.
Endotoxin	Please contact us for more information.
Storage	Generally, lyophilized proteins are stable for up to 12 months when stored at -20 to -80°C. Reconstituted protein solution can be stored at 4-8°C for 2-7 days. Aliquots of reconstituted samples are stable at < -20°C for 3 months.
Shipping	This product is provided as lyophilized powder which is shipped with ice packs.
Formulation	Lyophilized from sterile PBS, pH 7.4. Normally 5 % - 8 % trehalose, mannitol and 0.01 % Tween80 are added as protectants before lyophilization. Please refer to the specific buffer information in the printed manual.
Reconstitution	Please refer to the printed manual for detailed information.

Data



> 95 % as determined by reducing SDS-PAGE.

Background

Shared alpha chain of the active heterodimeric glycoprotein hormones thyrotropin/thyroid stimulating hormone/TSH, lutropin/luteinizing hormone/LH and follitropin/follicle stimulating hormone/FSH. These hormones bind specific receptors on target cells that in turn activate downstream signaling pathways.

For Research Use Only

A Reliable Research Partner in Life Science and Medicine

Toll-free: 1-888-852-8623

Web: www.elabscience.com

Tel: 1-832-243-6086

Email: techsupport@elabscience.com

Fax: 1-832-243-6017