

# RTCB Polyclonal Antibody

catalog number: E-AB-52501

**Note:** Centrifuge before opening to ensure complete recovery of vial contents.

## Description

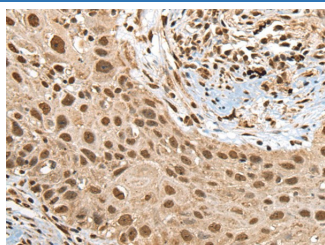
|                     |                                                                                    |
|---------------------|------------------------------------------------------------------------------------|
| <b>Reactivity</b>   | Human;Mouse;Rat                                                                    |
| <b>Immunogen</b>    | Fusion protein of human RTCB                                                       |
| <b>Host</b>         | Rabbit                                                                             |
| <b>Isotype</b>      | IgG                                                                                |
| <b>Purification</b> | Antigen affinity purification                                                      |
| <b>Conjugation</b>  | Unconjugated                                                                       |
| <b>buffer</b>       | Phosphate buffered solution, pH 7.4, containing 0.05% stabilizer and 50% glycerol. |

## Applications

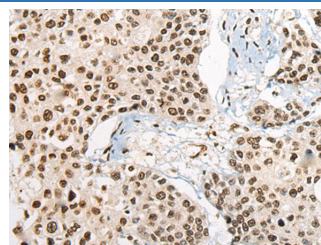
## Recommended Dilution

|            |            |
|------------|------------|
| <b>IHC</b> | 1:40-1:200 |
|------------|------------|

## Data



Immunohistochemistry of paraffin-embedded Human lung cancer tissue using RTCB Polyclonal Antibody at dilution of 1:45(×200)



Immunohistochemistry of paraffin-embedded Human prostate cancer tissue using RTCB Polyclonal Antibody at dilution of 1:45(×200)

## Preparation & Storage

|                 |                                                                                                          |
|-----------------|----------------------------------------------------------------------------------------------------------|
| <b>Storage</b>  | Store at -20°C Valid for 12 months. Avoid freeze / thaw cycles.                                          |
| <b>Shipping</b> | The product is shipped with ice pack, upon receipt, store it immediately at the temperature recommended. |

## Background

Catalytic subunit of the tRNA-splicing ligase complex that acts by directly joining spliced tRNA halves to mature-sized tRNAs by incorporating the precursor-derived splice junction phosphate into the mature tRNA as a canonical 3',5'-phosphodiester. May act as an RNA ligase with broad substrate specificity, and may function toward other RNAs.

## For Research Use Only