

Recombinant CD35 Monoclonal Antibody

catalog number: **AN301476L**

Note: Centrifuge before opening to ensure complete recovery of vial contents.

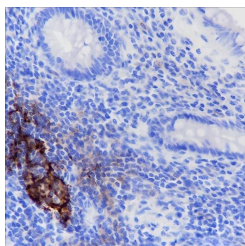
Description

Reactivity	Human;
Immunogen	Recombinant human CD35 fragment
Host	Rabbit
Isotype	IgG, κ
Clone	A171
Purification	Protein A purified
Buffer	PBS, 50% glycerol, 0.05% Proclin 300, 0.05% protein protectant.

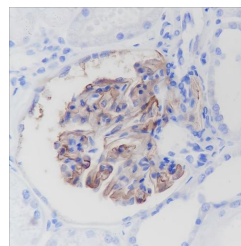
Applications Recommended Dilution

IHC	1:200-1:1000
IF	1:50

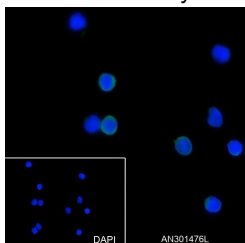
Data



Immunohistochemistry of paraffin-embedded Human colon using CD35 Monoclonal Antibody at dilution of 1:1000.



Immunohistochemistry of paraffin-embedded Human kidney using CD35 Monoclonal Antibody at dilution of 1:1000.



Immunofluorescent analysis of (4% Paraformaldehyde) fixed PBMCs cells using anti-CD35 Monoclonal Antibody at dilution of 1:50.

Preparation & Storage

Storage	Store at -20°C Valid for 12 months. Avoid freeze / thaw cycles.
Shipping	Ice bag

Background

CD35, also known as complement receptor 1 (CR1), is a 220-300 kDa N-glycosylated member of the RCA (regulators of complement activation) family of proteins. CD35 binds and internalizes particles and immune complexes that are opsonized with MBL or complement components C3b, C3i, C4b, or C1q. CD35 additionally protects the cell from complement-mediated lysis by serving as a cofactor for Factor I and inhibiting the C3 and C5 convertases. The extracellular domain (ECD) of human CD35 contains 30 tandem SCR/SUSHI repeats.

For Research Use Only