

## Recombinant Porcine IGHE Protein (His Tag)

Catalog Number: PDMP100004

**Note:** Centrifuge before opening to ensure complete recovery of vial contents.

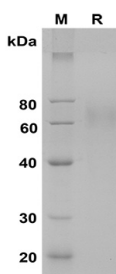
### Description

<b>Species</b>	Porcine
<b>Source</b>	HEK293 Cells-derived Porcine IGHE protein Ser1-Lys424, with an C-terminal His
<b>Calculated MW</b>	46.5 kDa
<b>Observed MW</b>	60-70 kDa
<b>Accession</b>	K7ZJQ0
<b>Bio-activity</b>	Not validated for activity

### Properties

<b>Purity</b>	> 85% as determined by reducing SDS-PAGE.
<b>Endotoxin</b>	< 1.0 EU/mg of the protein as determined by the LAL method
<b>Storage</b>	Generally, lyophilized proteins are stable for up to 12 months when stored at -20 to -80°C. Reconstituted protein solution can be stored at 4-8°C for 2-7 days. Aliquots of reconstituted samples are stable at < -20°C for 3 months.
<b>Shipping</b>	This product is provided as lyophilized powder which is shipped with ice packs.
<b>Formulation</b>	Lyophilized from a 0.2 µm filtered solution in PBS with 5% Trehalose and 5% Mannitol.
<b>Reconstitution</b>	It is recommended that sterile water be added to the vial to prepare a stock solution of 0.5 mg/mL. Concentration is measured by UV-Vis.

### Data



SDS-PAGE analysis of Porcine IGHE proteins, 2 µg/lane of Recombinant Porcine IGHE proteins was resolved with SDS-PAGE under reducing conditions, showing bands at 60-70 kDa.

### Background

IgE is the class of antibodies produced in the lungs, skin, and mucous membranes. It may protect against parasite invasion, but it is a major factor in allergic reactions. The antigen-specific IgE interacts with mast cells and eosinophils, triggers the release of histamine, leukotrienes and other substances that lead to the itching, sneezing and congestion of allergies-and the life threatening respiratory distress of asthma and anaphylactic shock.

### For Research Use Only