

SEPHS1 Polyclonal Antibody

Catalog Number:E-AB-53184



Note: Centrifuge before opening to ensure complete recovery of vial contents.

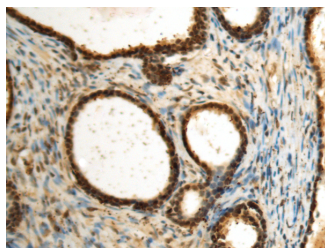
Description

Reactivity	Human, Mouse
Immunogen	Fusion protein of human SEPHS1
Host	Rabbit
Isotype	IgG
Purification	Antigen affinity purification
Conjugation	Unconjugated
Formulation	PBS with 0.05% NaN3 and 40% Glycerol,pH7.4

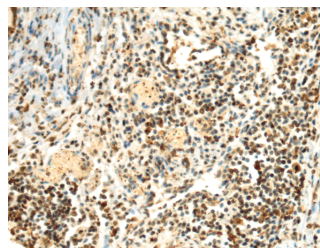
Applications Recommended Dilution

IHC	1:100-1:300
ELISA	1:5000-1:10000

Data



Immunohistochemistry of paraffin-embedded Human prostate cancer tissue using SEPHS1 Polyclonal Antibody at dilution of 1:85(×200)



Immunohistochemistry of paraffin-embedded Human lung cancer tissue using SEPHS1 Polyclonal Antibody at dilution of 1:85(×200)

Preparation & Storage

Storage Store at -20°C. Avoid freeze / thaw cycles.

Background

This gene encodes an enzyme that synthesizes selenophosphate from selenide and ATP. Selenophosphate is the selenium donor used to synthesize selenocysteine, which is co-translationally incorporated into selenoproteins at in-frame UGA codons.

For Research Use Only

A Reliable Research Partner in Life Science and Medicine

Toll-free: 1-888-852-8623

Web: www.elabscience.com

Tel: 1-832-243-6086

Email: techsupport@elabscience.com

Fax: 1-832-243-6017