

Recombinant SCGN/Secretagogen Monoclonal Antibody

catalog number: AN300253P

Note: Centrifuge before opening to ensure complete recovery of vial contents.

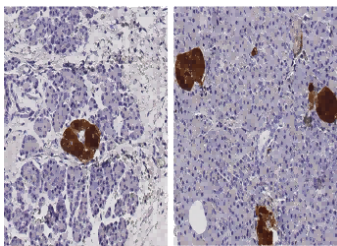
Description

Reactivity	Human
Immunogen	Recombinant Human SCGN / Secretagogen protein
Host	Rabbit
Isotype	IgG
Clone	10A12
Purification	Protein A
Buffer	0.2 µm filtered solution in PBS

Applications Recommended Dilution

IHC-P	1:100-1:500
--------------	-------------

Data



Immunohistochemistry of paraffin-embedded human pancreas using SCGN / Secretagogen Monoclonal Antibody at dilution of 1:200.

Preparation & Storage

Storage	This antibody can be stored at 2°C-8°C for one month without detectable loss of activity. Antibody products are stable for twelve months from date of receipt when stored at -20°C to -80°C. Preservative-Free. Avoid repeated freeze-thaw cycles.
Shipping	Ice bag

Background

The encoded protein is a secreted calcium-binding protein which is found in the cytoplasm. It is related to calbindin D-25K and calretinin. This protein is thought to be involved in KCL-stimulated calcium flux and cell proliferation.

For Research Use Only