

Purified Anti-Rat Cd8a Antibody[OX-8], Functional Grade

catalog number: E-AB-F10980

Note: Centrifuge before opening to ensure complete recovery of vial contents.

Description

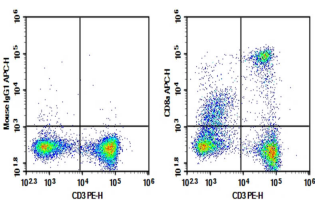
Reactivity	Rat
Immunogen	Recombinant Rat CD8a protein
Host	Mouse
Isotype	Mouse IgG1, κ
Clone	OX-8
Purification	>98%, Protein A/G purified
Buffer	Sterile PBS, pH 7.2. < 1.0 EU per mg of the antibody as determined by the LAL method.

Applications

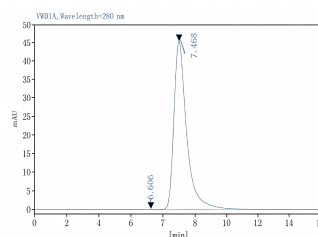
Recommended Dilution

FCM	2 μ g/mL (0.5 \times 10 ⁶ -1 \times 10 ⁶ cells)
Depletion	Reported in the literature

Data



Rat splenocytes were stained with 0.2 μ g Purified Anti-Rat CD8a Antibody[OX-8], Functional Grade (Right) and 0.2 μ g Mouse IgG1, κ Isotype Control (Left), followed by APC-conjugated Goat Anti-Mouse IgG Secondary Antibody, then anti-Mouse CD3 PE-conjugated Monoclonal Antibody.



Monomer purity \geq 95% as determined by analytical size-exclusion chromatography (SEC)

Preparation & Storage

Storage	Store at 4°C valid for 12 months or -20°C valid for long term storage, avoid freeze / thaw cycles. This preparation contains no preservatives, thus it should be handled under aseptic conditions.
Shipping	Ice bag

Background

For Research Use Only

CD8, also known as Lyt-2, Ly-2, or T8, consists of disulfide-linked α and β chains that form the α (CD8a)/ β (CD8b) heterodimer and α/α homodimer. CD8a is a 34 kD protein that belongs to the immunoglobulin family. The CD8 α/β heterodimer is expressed on the surface of most thymocytes and a subset of mature TCR α/β T cells. CD8 expression on mature T cells is non-overlapping with CD4. The CD8 α/α homodimer is expressed on a subset of γ/δ TCR-bearing T cells, NK cells, intestinal intraepithelial lymphocytes, and lymphoid dendritic cells. CD8 is an antigen co-receptor on T cells that interacts with MHC class I on antigen-presenting cells or epithelial cells. CD8 promotes T cell activation through its association with the TCR complex and protein tyrosine kinase Lck.

None (Azide-Free, Low Endotoxin) are perfectly suited to be used in culture or in vivo (for nonhuman studies) for functional assays blocking, neutralizing, activation or depletion where the presence of azide may damage cells or exogenous endotoxin may signal or activate cells.

Application References

Alex S Hartlage, et al. Nat Commun. 2019 Mar 7;10(1):1113.