

## Recombinant Human PRADC1/PAP21 Protein (His Tag)

Catalog Number: PKSH032919

**Note:** Centrifuge before opening to ensure complete recovery of vial contents.

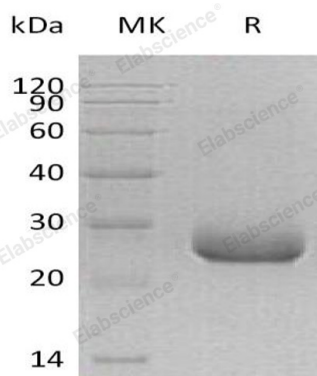
### Description

<b>Species</b>	Human
<b>Source</b>	HEK293 Cells-derived Human PRADC1;PAP21 protein His22-Trp188, with an C-terminal His
<b>Calculated MW</b>	20.0 kDa
<b>Observed MW</b>	28 kDa
<b>Accession</b>	Q9BSG0
<b>Bio-activity</b>	Not validated for activity

### Properties

<b>Purity</b>	> 95 % as determined by reducing SDS-PAGE.
<b>Endotoxin</b>	< 1.0 EU per µg of the protein as determined by the LAL method.
<b>Storage</b>	Generally, lyophilized proteins are stable for up to 12 months when stored at -20 to -80°C. Reconstituted protein solution can be stored at 4-8°C for 2-7 days. Aliquots of reconstituted samples are stable at < -20°C for 3 months.
<b>Shipping</b>	This product is provided as lyophilized powder which is shipped with ice packs.
<b>Formulation</b>	Lyophilized from a 0.2 µm filtered solution of 20mM PB, 150mM NaCl, pH7.4. Normally 5% - 8% trehalose, mannitol and 0.01% Tween 80 are added as protectants before lyophilization. Please refer to the specific buffer information in the printed manual.
<b>Reconstitution</b>	Please refer to the printed manual for detailed information.

### Data



> 95 % as determined by reducing SDS-PAGE.

### Background

PRADC1, also known as C2orf7 or PAP21, is short for Protease-associated domain-containing protein 1. It is a 188 aa. with a 21 aa. signal, and the 171 located Asn can be glycosylated. PRADC1 has two mutations which are N121Q and N171Q. This protein is secreted and highly expressed in skeletal muscle, heart and liver. It is expressed at intermediate level in kidney.

### For Research Use Only