

BABAM2 Polyclonal Antibody

catalog number: E-AB-11008

Note: Centrifuge before opening to ensure complete recovery of vial contents.

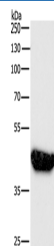
Description

Reactivity	Human;Mouse;Rat
Immunogen	Recombinant protein of human BRE
Host	Rabbit
Isotype	IgG
Purification	Affinity purification
Buffer	Phosphate buffered solution, pH 7.4, containing 0.05% stabilizer and 50% glycerol.

Applications

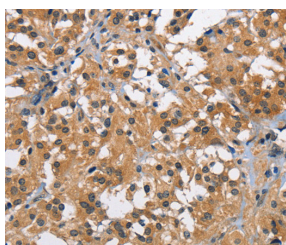
Applications	Recommended Dilution
WB	1:500-1:2000
IHC	1:50-1:200

Data

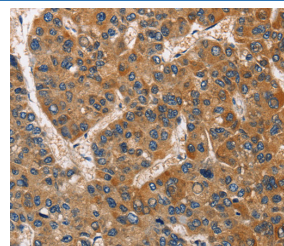


Western Blot analysis of A431 using BABAM2 Polyclonal Antibody at dilution of 1:750

Calculated-MW:44 kDa



Immunohistochemistry of paraffin-embedded Human thyroid cancer using BABAM2 Polyclonal Antibody at dilution of 1:40



Immunohistochemistry of paraffin-embedded Human liver cancer using BABAM2 Polyclonal Antibody at dilution of 1:40

Preparation & Storage

Storage	Store at -20°C Valid for 12 months. Avoid freeze / thaw cycles.
Shipping	The product is shipped with ice pack, upon receipt, store it immediately at the temperature recommended.

Background

For Research Use Only

Brain and reproductive organ-expressed protein (BRE) is a 415 amino acid protein which binds to the intracellular juxtamembrane domain of the death receptor, tumor necrosis factor receptor 1 (TNF-R1). BRE also binds to the death receptor, FAS. BRE downregulates TNF α -induced activation of NF κ B and may play a role in homeostasis or cellular differentiation in cells of epithelial, neural and germ line origins. It inhibits components of the death-inducing signaling complexes that are necessary for activation of the mitochondria, thereby mediating apoptosis. BRE is strongly expressed in the adrenal cortex, medulla, testis and pancreas, and is weakly expressed in the thymus, thyroid, stomach and small intestine.

For Research Use Only

Toll-free: 1-888-852-8623
Web: www.elabscience.com

Tel: 1-832-243-6086
Email: techsupport@elabscience.com

Fax: 1-832-243-6017

Rev. V1.8