

PDGFR beta Polyclonal Antibody

catalog number: **E-AB-67422**

Note: *Centrifuge before opening to ensure complete recovery of vial contents.*

Description

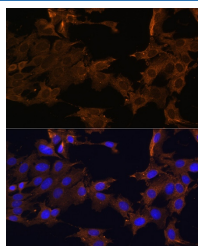
Reactivity	Human;Mouse
Immunogen	Recombinant fusion protein of human PDGFR beta (NP_002600.1).
Host	Rabbit
Isotype	IgG
Purification	Affinity purification
Buffer	Phosphate buffered solution, pH 7.4, containing 0.05% stabilizer and 50% glycerol.

Applications

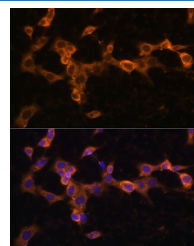
Recommended Dilution

IHC	1:50-1:200
IF	1:50-1:200

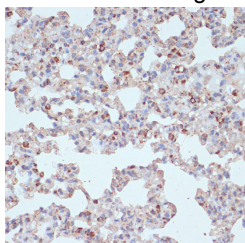
Data



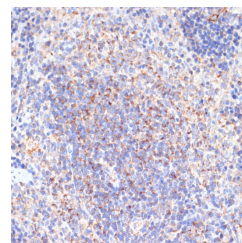
Immunofluorescence analysis of C6 cells using PDGFR beta Polyclonal Antibody at dilution of 1:100. Blue: DAPI for nuclear staining.



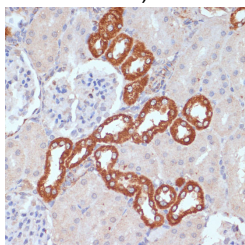
Immunofluorescence analysis of NIH/3T3 cells using PDGFR beta Polyclonal Antibody at dilution of 1:100. Blue: DAPI for nuclear staining.



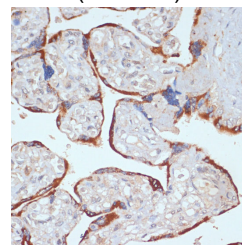
Immunohistochemistry of paraffin-embedded Rat lung using PDGFR beta Polyclonal Antibody at dilution of 1:100 (40x lens).



Immunohistochemistry of paraffin-embedded Rat spleen using PDGFR beta Polyclonal Antibody at dilution of 1:100 (40x lens).

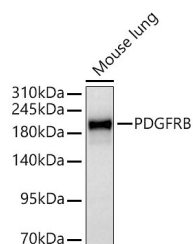


Immunohistochemistry of paraffin-embedded Rat kidney using PDGFR beta Polyclonal Antibody at dilution of 1:100 (40x lens).

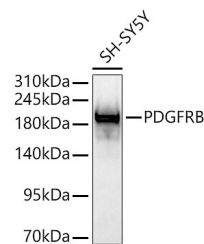


Immunohistochemistry of paraffin-embedded Human placenta using PDGFR beta Polyclonal Antibody at dilution of 1:100 (40x lens).

For Research Use Only



Western blot analysis of lysates from Mouse lung using PDGFRB Rabbit pAb (A2180SP) at 1:1000 dilution incubated overnight at 4°C. |Secondary antibody: HRP-conjugated Goat anti-Rabbit IgG (H+L) (AS014) at 1:10000 dilution. |Lysates/proteins: 25 µg per lane. |Blocking buffer: 3% nonfat dry milk in TBST. |Detection: ECL Basic Kit (RM00020). |Exposure time: 10 s.



Western blot analysis of lysates from SH-SY5Y cells using PDGFRB Rabbit pAb (A2180SP) at 1:1000 dilution incubated overnight at 4°C. |Secondary antibody: HRP-conjugated Goat anti-Rabbit IgG (H+L) (AS014) at 1:10000 dilution. |Lysates/proteins: 25 µg per lane. |Blocking buffer: 3% nonfat dry milk in TBST. |Detection: ECL Basic Kit (RM00020). |Exposure time: 20 s.

Preparation & Storage

Storage

Store at -20°C Valid for 12 months. Avoid freeze / thaw cycles.

Shipping

The product is shipped with ice pack, upon receipt, store it immediately at the temperature recommended.

Background

This gene encodes a cell surface tyrosine kinase receptor for members of the platelet-derived growth factor family. These growth factors are mitogens for cells of mesenchymal origin. The identity of the growth factor bound to a receptor monomer determines whether the functional receptor is a homodimer or a heterodimer, composed of both platelet-derived growth factor receptor alpha and beta polypeptides. This gene is flanked on chromosome 5 by the genes for granulocyte-macrophage colony-stimulating factor and macrophage-colony stimulating factor receptor; all three genes may be implicated in the 5-q syndrome. A translocation between chromosomes 5 and 12, that fuses this gene to that of the translocation, ETV6, leukemia gene, results in chronic myeloproliferative disorder with eosinophilia