

CDKL2 Polyclonal Antibody

catalog number: E-AB-19684

Note: Centrifuge before opening to ensure complete recovery of vial contents.

Description

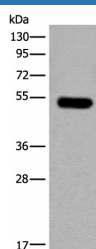
Reactivity	Human;Mouse;Rat
Immunogen	Synthetic peptide of human CDKL2
Host	Rabbit
Isotype	IgG
Purification	Antigen affinity purification
Conjugation	Unconjugated
Buffer	Phosphate buffered solution, pH 7.4, containing 0.05% stabilizer and 50% glycerol.

Applications

Recommended Dilution

WB	1:500-1:2000
IHC	1:25-1:100

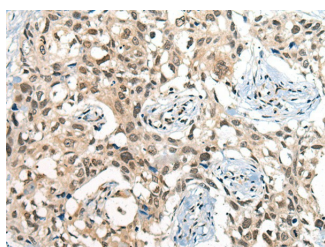
Data



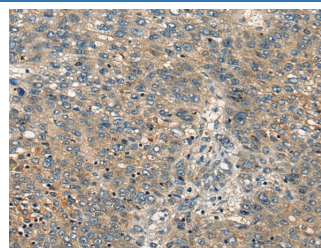
Western blot analysis of Mouse brain tissue lysate using CDKL2 Polyclonal Antibody at dilution of 1:250

Observed-MV: Refer to figures

Calculated-MV: 56 kDa



Immunohistochemistry of paraffin-embedded Human lung cancer tissue using CDKL2 Polyclonal Antibody at dilution of 1:25 (×200)



Immunohistochemistry of paraffin-embedded Human liver cancer tissue using CDKL2 Polyclonal Antibody at dilution of 1:25 (×200)

Preparation & Storage

Storage	Store at -20°C Valid for 12 months. Avoid freeze / thaw cycles.
Shipping	The product is shipped with ice pack, upon receipt, store it immediately at the temperature recommended.

Background

This gene product is a member of a large family of CDC2-related serine/threonine protein kinases. It accumulates primarily in the cytoplasm, with lower levels in the nucleus.

For Research Use Only