

RPE Polyclonal Antibody

Catalog Number:E-AB-65107

Note: Centrifuge before opening to ensure complete recovery of vial contents.

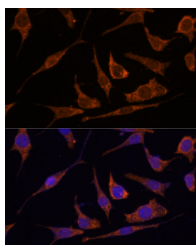
Description

Reactivity	Human,Mouse,Rat
Immunogen	Recombinant fusion protein of human RPE (NP_954699.1).
Host	Rabbit
Isotype	IgG
Purification	Affinity purification
Conjugation	Unconjugated
Formulation	PBS with 0.02% sodium azide, 50% glycerol, pH7.3.

Applications Recommended Dilution

IF	1:50-1:100
-----------	------------

Data



Immunofluorescence analysis of L929 cells using RPE Polyclonal Antibody at dilution of 1:100 (40x lens).
Blue: DAPI for nuclear staining.

Preparation & Storage

Storage	Store at -20°C. Avoid freeze / thaw cycles.
----------------	---

Background

RPE (Ribulose-5-Phosphate-3-Epimerase) is a Protein Coding gene. Diseases associated with RPE include Cardiomyopathy, Familial Restrictive, 2. Among its related pathways are Pentose phosphate pathway and Metabolism. Gene Ontology (GO) annotations related to this gene include protein homodimerization activity and racemase and epimerase activity, acting on carbohydrates and derivatives. An important paralog of this gene is RPEL1.

For Research Use Only

A Reliable Research Partner in Life Science and Medicine

Toll-free: 1-888-852-8623

Web: www.elabscience.com

Tel: 1-832-243-6086

Email: techsupport@elabscience.com

Fax: 1-832-243-6017