

Recombinant S6K1 Monoclonal Antibody

catalog number: **AN300990L**

Note: Centrifuge before opening to ensure complete recovery of vial contents.

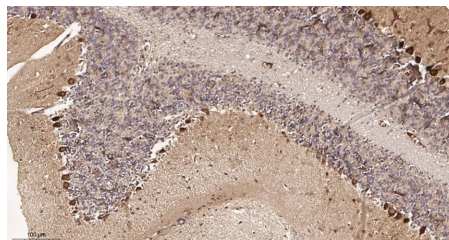
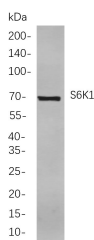
Description

Reactivity	Human;Mouse;Rat
Immunogen	Recombinant Human S6K1 protein
Host	Rabbit
Isotype	IgG, κ
Clone	B741
Purification	Protein A
Buffer	PBS, 50% glycerol, 0.05% Proclin 300, 0.05% protein protectant.

Applications Recommended Dilution

IHC	1:200-1:1000
WB	1:1000-1:5000
IF	1:200-1:1000
ELISA	1:5000-1:20000
IP	1:50-1:200,

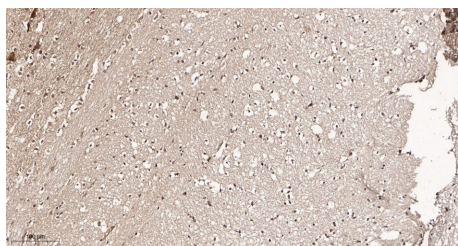
Data



Western Blot with Recombinant S6K1 Monoclonal Antibody at dilution of 1:1000. Lane A: Mouse lung, Lane B: Rat lung.

Immunohistochemistry of paraffin-embedded mouse brain tissue using Recombinant S6K1 Monoclonal Antibody at dilution of 1:200.

Observed-MW:70 kDa
Calculated-MW:59 kDa



Immunohistochemistry of paraffin-embedded rat brain tissue using Recombinant S6K1 Monoclonal Antibody at dilution of 1:200.

Preparation & Storage

Storage	Store at -20°C Valid for 12 months. Avoid freeze / thaw cycles.
Shipping	Ice bag

Background

For Research Use Only

Toll-free: 1-888-852-8623
Web: www.elabscience.com

Tel: 1-832-243-6086
Email: techsupport@elabscience.com

Fax: 1-832-243-6017

Rev. V1.2

RPS6KB1(ribosomal protein S6 kinase B1) Homo sapiens This gene encodes a member of the ribosomal S6 kinase family of serine/threonine kinases. The encoded protein responds to mTOR (mammalian target of rapamycin) signaling to promote protein synthesis, cell growth, and cell proliferation. Activity of this gene has been associated with human cancer. Alternatively spliced transcript variants have been observed. The use of alternative translation start sites results in isoforms with longer or shorter N-termini which may differ in their subcellular localizations. There are two pseudogenes for this gene on chromosome 17.