

Recombinant Human CD159a/KLRC1 Protein (His Tag)

Catalog Number: PKSH032813



Note: Centrifuge before opening to ensure complete recovery of vial contents.

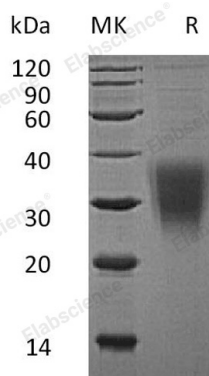
Description

Species	Human
Mol_Mass	16.5 kDa
Accession	P26715
Bio-activity	Not validated for activity

Properties

Purity	> 95 % as determined by reducing SDS-PAGE.
Endotoxin	< 1.0 EU per µg of the protein as determined by the LAL method.
Storage	Generally, lyophilized proteins are stable for up to 12 months when stored at -20 to -80 °C. Reconstituted protein solution can be stored at 4-8°C for 2-7 days. Aliquots of reconstituted samples are stable at < -20°C for 3 months.
Shipping	This product is provided as lyophilized powder which is shipped with ice packs.
Formulation	Lyophilized from a 0.2 µm filtered solution of PBS, pH 7.4. Normally 5% - 8% trehalose, mannitol and 0.01% Tween 80 are added as protectants before lyophilization. Please refer to the specific buffer information in the printed manual.
Reconstitution	Please refer to the printed manual for detailed information.

Data



> 95 % as determined by reducing SDS-PAGE.

Background

NKG2-A/NKG2-B Type II Integral Membrane Protein contains 1 C-type lectin domain and belongs to the killer cell lectin-like receptor family. The killer cell lectin-like receptor family is a group of transmembrane proteins preferentially expressed in NK cells. Members of this proteins is characterized by the type II membrane orientation and the presence of a C-type lectin domain. NKG2 is expressed only in NK-cells, but not in T-cells or B-cells. It has been shown that NKG2 represents a family of related cDNA clones, designated NKG2A, NKG2B, NKG2C, and NKG2D, which encode type 2 integral membrane proteins (extracellular C-terminus) containing a C-type lectin domain. NKG2 plays a role as a receptor for the recognition of MHC class I HLA-E molecules by NK cells and some cytotoxic T-cells. NKG2A and NKG2B have been given the designation CD159a in the nomenclature of CD antigens.

For Research Use Only

A Reliable Research Partner in Life Science and Medicine
Tel:400-999-2100

Email:techsupport@elabscience.cn

Web:www.elabscience.cn

Rev. V3.2