

ITGA11 Polyclonal Antibody

catalog number: E-AB-18136

Note: Centrifuge before opening to ensure complete recovery of vial contents.

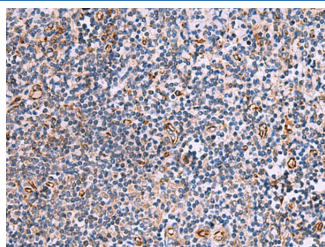
Description

| | |
|---------------------|------------------------------------------------------------------------------------|
| Reactivity | Human |
| Immunogen | Synthetic peptide of human ITGA11 |
| Host | Rabbit |
| Isotype | IgG |
| Purification | Antigen affinity purification |
| Buffer | Phosphate buffered solution, pH 7.4, containing 0.05% stabilizer and 50% glycerol. |

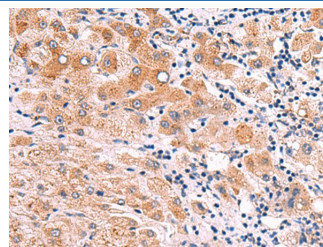
Applications

| Applications | Recommended Dilution |
|--------------|----------------------|
| IHC | 1:50-1:300 |

Data



Immunohistochemistry of paraffin-embedded Human tonsil tissue using ITGA11 Polyclonal Antibody at dilution of 1:75(×200)



Immunohistochemistry of paraffin-embedded Human liver cancer tissue using ITGA11 Polyclonal Antibody at dilution of 1:75(×200)

Preparation & Storage

| | |
|-----------------|----------------------------------------------------------------------------------------------------------|
| Storage | Store at -20°C Valid for 12 months. Avoid freeze / thaw cycles. |
| Shipping | The product is shipped with ice pack, upon receipt, store it immediately at the temperature recommended. |

Background

This gene encodes an alpha integrin. Integrins are heterodimeric integral membrane proteins composed of an alpha chain and a beta chain. This protein contains an I domain, is expressed in muscle tissue, dimerizes with beta 1 integrin in vitro, and appears to bind collagen in this form. Therefore, the protein may be involved in attaching muscle tissue to the extracellular matrix. Alternative transcriptional splice variants have been found for this gene, but their biological validity is not determined.

For Research Use Only