

## (KO Validated) NRBF2 Polyclonal Antibody

catalog number: E-AB-61982

**Note:** Centrifuge before opening to ensure complete recovery of vial contents.

### Description

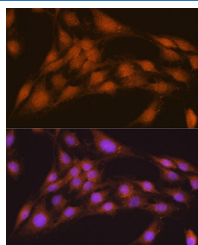
<b>Reactivity</b>	Human;Mouse;Rat
<b>Immunogen</b>	Recombinant fusion protein of human NRBF2 (NP_110386.2).
<b>Host</b>	Rabbit
<b>Isotype</b>	IgG
<b>Purification</b>	Affinity purification
<b>Buffer</b>	Phosphate buffered solution, pH 7.4, containing 0.05% stabilizer and 50% glycerol.

### Applications

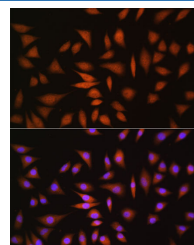
### Recommended Dilution

<b>IF</b>	1:10-1:100
-----------	------------

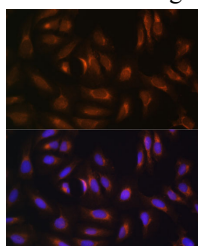
### Data



Immunofluorescence analysis of C6 cells using NRBF2 Polyclonal Antibody at dilution of 1:100. Blue: DAPI for nuclear staining.



Immunofluorescence analysis of L929 cells using NRBF2 Polyclonal Antibody at dilution of 1:100. Blue: DAPI for nuclear staining.



Immunofluorescence analysis of U-2 OS cells using NRBF2 Polyclonal Antibody at dilution of 1:100. Blue: DAPI for nuclear staining.

### Preparation & Storage

<b>Storage</b>	Store at -20°C Valid for 12 months. Avoid freeze / thaw cycles.
<b>Shipping</b>	The product is shipped with ice pack, upon receipt, store it immediately at the temperature recommended.

### Background

NRBF2 (Nuclear Receptor Binding Factor 2) is a Protein Coding gene. Diseases associated with NRBF2 include Alzheimer Disease. Among its related pathways are Spinocerebellar ataxia and Parkinson disease.

### For Research Use Only