

# BRF2 Polyclonal Antibody

catalog number: E-AB-18547

**Note:** Centrifuge before opening to ensure complete recovery of vial contents.

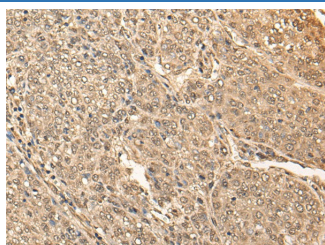
## Description

|                     |  |
|---------------------|--|
| <b>Reactivity</b>   | Human  |
| <b>Immunogen</b>    | Fusion protein of human BRF2   |
| <b>Host</b>         | Rabbit   |
| <b>Isotype</b>      | IgG  |
| <b>Purification</b> | Antigen affinity purification  |
| <b>Conjugation</b>  | Unconjugated   |
| <b>buffer</b>       | Phosphate buffered solution, pH 7.4, containing 0.05% stabilizer and 50% glycerol. |

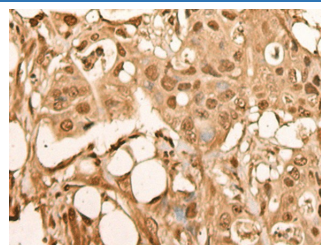
## Applications

| Applications | Recommended Dilution |
|--------------|----------------------|
| IHC          | 1:30-1:150           |

## Data



Immunohistochemistry of paraffin-embedded Human liver cancer tissue using BRF2 Polyclonal Antibody at dilution of 1:40(×200)



Immunohistochemistry of paraffin-embedded Human colorectal cancer tissue using BRF2 Polyclonal Antibody at dilution of 1:40(×200)

## Preparation & Storage

|                 |  |
|-----------------|--|
| <b>Storage</b>  | Store at -20°C Valid for 12 months. Avoid freeze / thaw cycles.  |
| <b>Shipping</b> | The product is shipped with ice pack, upon receipt, store it immediately at the temperature recommended. |

## Background

This gene encodes one of the multiple subunits of the RNA polymerase III transcription factor complex required for transcription of genes with promoter elements upstream of the initiation site. The product of this gene, a TFIIB-like factor, is directly recruited to the TATA-box of polymerase III small nuclear RNA gene promoters through its interaction with the TATA-binding protein.

## For Research Use Only