

# CAV1 Polyclonal Antibody

catalog number: E-AB-70344

**Note:** Centrifuge before opening to ensure complete recovery of vial contents.

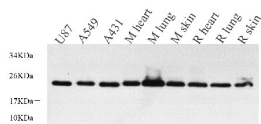
## Description

<b>Reactivity</b>	Human;Mouse;Rat
<b>Immunogen</b>	KLH conjugated Synthetic peptide corresponding to Mouse Caveolin-1
<b>Host</b>	Rabbit
<b>Isotype</b>	IgG
<b>Purification</b>	Affinity purification
<b>Conjugation</b>	Unconjugated
<b>buffer</b>	Phosphate buffered solution, pH 7.4, containing 0.05% stabilizer, 1% protein protectant and 50% glycerol.

## Applications

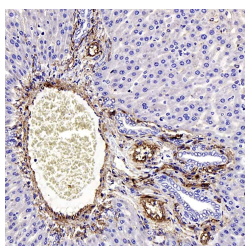
Applications	Recommended Dilution
<b>WB</b>	1:500-1:2000
<b>IHC</b>	1:500-1:1000

## Data

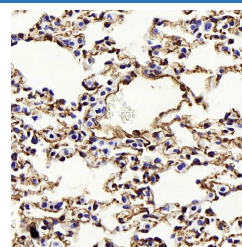


Western Blot analysis of various samples using CAV1 Polyclonal Antibody at dilution of 1:800.

**Observed-MV:20 kDa**  
**Calculated-MV:20 kDa**



Immunohistochemistry analysis of paraffin-embedded rat liver using CAV1 Polyclonal Antibody at dilution of 1:1000.



Immunohistochemistry analysis of paraffin-embedded mouse lung using CAV1 Polyclonal Antibody at dilution of 1:1000.

## Preparation & Storage

<b>Storage</b>	Store at -20°C Valid for 12 months. Avoid freeze / thaw cycles.
<b>Shipping</b>	The product is shipped with ice pack, upon receipt, store it immediately at the temperature recommended.

## Background

Caveolin-1 (CAV1), a multifunctional protein, is the main constituent molecule of caveolae and represents a scaffolding molecule for several signaling molecules including epidermal growth factor receptor. Several studies have implicated that a reduced expression of CAV1 was found in cancers including head and neck carcinoma. However, other studies recognize CAV1 as a tumor promoter because CAV1 is overexpressed in various kinds of cancers, especially in oral cancer. Recent study also shows that CAV1 is involved in gastric cancer.

## For Research Use Only