

Recombinant Cynomolgus CD40/TNFRSF5/CD40L Receptor Protein (Fc Tag)

Catalog Number: **PKSQ050044**

Note: Centrifuge before opening to ensure complete recovery of vial contents.

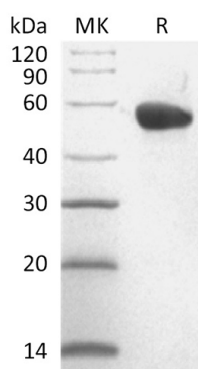
Description

Species	Cynomolgus macaques
Source	HEK293 Cells-derived Cynomolgus macaques CD40/TNFRSF5 protein Glu21-Arg193, with an C-terminal Fc
Calculated MW	46.3 kDa
Observed MW	48-70 kDa
Accession	XP_005569275.1
Bio-activity	Not validated for activity

Properties

Purity	> 95 % as determined by reducing SDS-PAGE.
Endotoxin	< 1.0 EU per µg of the protein as determined by the LAL method.
Storage	Generally, lyophilized proteins are stable for up to 12 months when stored at -20 to -80°C. Reconstituted protein solution can be stored at 4-8°C for 2-7 days. Aliquots of reconstituted samples are stable at < -20°C for 3 months.
Shipping	This product is provided as lyophilized powder which is shipped with ice packs.
Formulation	Lyophilized from a 0.2 µm filtered solution of 50 mM Tris-HCl, 100 mM Glycine, pH 7.5. Normally 5% - 8% trehalose, mannitol and 0.01% Tween 80 are added as protectants before lyophilization. Please refer to the specific buffer information in the printed manual.
Reconstitution	Please refer to the printed manual for detailed information.

Data



> 95 % as determined by reducing SDS-PAGE.

Background

CD40 is a Type I Transmembrane Glycoprotein that belongs to the TNF Receptor Superfamily. CD40 is expressed in B cells, follicular dendritic cells, dendritic cells, activated monocytes, macrophages, endothelial cells, vascular smooth muscle cells, and several tumor cell lines. The extracellular domain of CD40 is characterized by Cysteine rich repeat regions. Interaction of CD40 with its ligand (CD40L) leads to aggregation of CD40 molecules, which in turn interact with cytoplasmic components to initiate signaling pathways. Several different TRAF proteins (adaptor proteins) have been identified to serve as mediators of the signal transduction.

For Research Use Only

Toll-free: 1-888-852-8623
Web: www.elabscience.com

Tel: 1-832-243-6086
Email: techsupport@elabscience.com

Fax: 1-832-243-6017