

S100A6 Polyclonal Antibody

catalog number: D-AB-10215L

Note: Centrifuge before opening to ensure complete recovery of vial contents.

Description	
Reactivity	Human;Mouse;Rat
Immunogen	Recombinant Rat Protein S100-A6 protein
Host	Rabbit
Isotype	IgG
Purification	Antigen Affinity Purification
Conjugation	Unconjugated
Buffer	PBS with 0.05% Proclin300, 1% protective protein and 50% glycerol, pH7.4
Applications	Recommended Dilution
WB	1:1000-1:2000
IHC	1:50-1:200

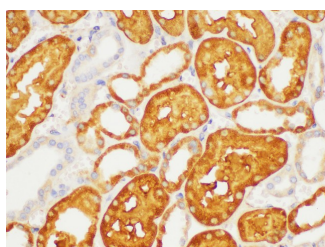
Data



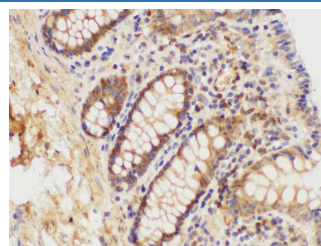
Western blot of RAW 264.7 cell lysate with anti-S100A6 polyclonal antibody at 1:1000 dilution.

Observed-MW:10 kDa

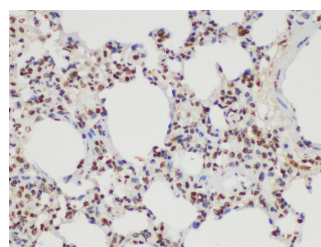
Calculated-MW:10 kDa



Immunohistochemistry of paraffin-embedded Human kidney using S100A6 Polyclonal Antibody at dilution of 1:100



Immunohistochemistry of paraffin-embedded Human colon using S100A6 Polyclonal Antibody at dilution of 1:100



Immunohistochemistry of paraffin-embedded Rat lung using S100A6 Polyclonal Antibody at dilution of 1:100

Preparation & Storage

Storage	Store at -20°C Valid for 12 months. Avoid freeze / thaw cycles.
Shipping	The product is shipped with ice pack, upon receipt, store it immediately at the temperature recommended.

Background

The protein encoded by this gene is a member of the S100 family of proteins containing 2 EF-hand calcium-binding motifs. S100 proteins are localized in the cytoplasm and/or nucleus of a wide range of cells, and involved in the regulation of a number of cellular processes such as cell cycle progression and differentiation. S100 genes include at least 13 members which are located as a cluster on chromosome 1q21.

For Research Use Only