

Recombinant Human GALM Protein (His Tag)

Catalog Number: PKSH032469

Note: Centrifuge before opening to ensure complete recovery of vial contents.

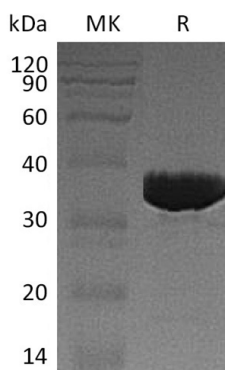
Description

Species	Human
Source	E.coli-derived Human GALM protein Ala2-Ala342, with an C-terminal His
Calculated MW	38.8 kDa
Observed MW	34 kDa
Accession	Q96C23
Bio-activity	Not validated for activity

Properties

Purity	> 95 % as determined by reducing SDS-PAGE.
Concentration	Subject to label value.
Endotoxin	< 1.0 EU per µg of the protein as determined by the LAL method.
Storage	Store at < -20°C, stable for 6 months. Please minimize freeze-thaw cycles.
Shipping	This product is provided as liquid. It is shipped at frozen temperature with blue ice/gel packs. Upon receipt, store it immediately at < -20°C.
Formulation	Supplied as a 0.2 µm filtered solution of PBS, pH7.4.

Data



> 95 % as determined by reducing SDS-PAGE.

Background

Galactose Mutarotase (GALM) is a cytoplasmic enzyme that belongs to the Aldose Epimerase family. GALM is a Mutarotase that converts α -Aldose to the β -Anomer. GALM is active on D-Glucose, L-Arabinose, D-Xylose, D-Galactose, Maltose and Lactose. GALM may be required for normal Galactose metabolism by maintaining the equilibrium of α - and β - anomers of Galactose.

For Research Use Only