

Recombinant Human BOLA1 Protein (His Tag)

Catalog Number: PKSH030568

Note: *Centrifuge before opening to ensure complete recovery of vial contents.*

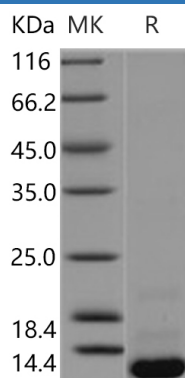
Description

Species	Human
Source	E.coli-derived Human BOLA1 protein Met 1-Pro137, with an N-terminal His
Calculated MW	16.4 kDa
Observed MW	10 kDa
Accession	Q9Y3E2
Bio-activity	Not validated for activity

Properties

Purity	> 90 % as determined by reducing SDS-PAGE.
Endotoxin	Please contact us for more information.
Storage	Generally, lyophilized proteins are stable for up to 12 months when stored at -20 to -80°C. Reconstituted protein solution can be stored at 4-8°C for 2-7 days. Aliquots of reconstituted samples are stable at < -20°C for 3 months.
Shipping	This product is provided as lyophilized powder which is shipped with ice packs.
Formulation	Lyophilized from sterile PBS, pH 7.4 Normally 5% - 8% trehalose, mannitol and 0.01% Tween 80 are added as protectants before lyophilization. Please refer to the specific buffer information in the printed manual.
Reconstitution	Please refer to the printed manual for detailed information.

Data



> 90 % as determined by reducing SDS-PAGE.

Background

Galactolipase, also known as PNLIPRP2, is a lipase with broad substrate specificity. It can hydrolyze both phospholipids and galactolipids. Galactolipase acts preferentially on monoglycerides, phospholipids and galactolipids. It also hydrolyses milk fat with a lower catalytic efficiency. The expressed galactolipase shows a lipolytic activity that is, however, only marginally dependent on the presence of colipase. The lipolytic activity of pancreatic extracts and human pancreatic juice on Labrasol is mainly due to the combined action of carboxyl ester hydrolase and galactolipase.

For Research Use Only

Toll-free: 1-888-852-8623
Web: www.elabscience.com

Tel: 1-832-243-6086
Email: techsupport@elabscience.com

Fax: 1-832-243-6017