

Recombinant CD31 Monoclonal Antibody

catalog number: **AN300911L**

Note: Centrifuge before opening to ensure complete recovery of vial contents.

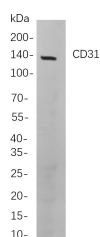
Description

Reactivity	Human;Mouse;Rat
Immunogen	Recombinant Human CD31 protein
Host	Rabbit
Isotype	IgG, κ
Clone	8C12
Purification	Protein A
Buffer	PBS, 50% glycerol, 0.05% Proclin 300, 0.05% protein protectant.

Applications

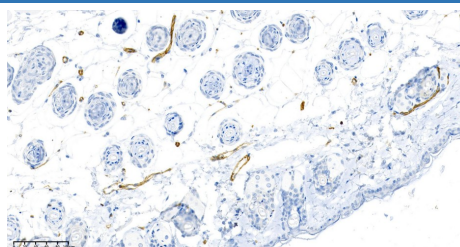
Applications	Recommended Dilution
IHC	1:1000-1:2000
WB	1:1000-1:5000

Data



Western Blot with Recombinant CD31 Monoclonal Antibody at dilution of 1:1000 dilution. Lane A: HepG2 cells.

Observed-MW:130 kDa
Calculated-MW:81 kDa



Immunohistochemistry of paraffin-embedded mouse skin using Recombinant CD31 Monoclonal Antibody at dilution of 1:200.

Preparation & Storage

Storage	Store at -20°C Valid for 12 months. Avoid freeze / thaw cycles.
Shipping	Ice bag

Background

PECAM1 (platelet and endothelial cell adhesion molecule 1) Homo sapiens The protein encoded by this gene is found on the surface of platelets, monocytes, neutrophils, and some types of T-cells, and makes up a large portion of endothelial cell intercellular junctions. The encoded protein is a member of the immunoglobulin superfamily and is likely involved in leukocyte migration, angiogenesis, and integrin activation.

For Research Use Only

Toll-free: 1-888-852-8623
Web: www.elabscience.com

Tel: 1-832-243-6086
Email: techsupport@elabscience.com

Fax: 1-832-243-6017

Rev. V1.0