

## Recombinant Human IL17B/IL-17B Protein (Fc Tag)

**Catalog Number:** PKSH033628

**Note:** Centrifuge before opening to ensure complete recovery of vial contents.

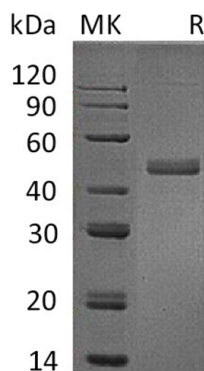
### Description

<b>Species</b>	Human
<b>Source</b>	HEK293 Cells-derived Human IL17B/IL-17B protein Gln21-Phe180, with an C-terminal Fc
<b>Calculated MW</b>	45.1 kDa
<b>Observed MW</b>	48 kDa
<b>Accession</b>	Q9UHF5
<b>Bio-activity</b>	Not validated for activity

### Properties

<b>Purity</b>	> 95 % as determined by reducing SDS-PAGE.
<b>Endotoxin</b>	< 1.0 EU per µg of the protein as determined by the LAL method.
<b>Storage</b>	Generally, lyophilized proteins are stable for up to 12 months when stored at -20 to -80°C. Reconstituted protein solution can be stored at 4-8°C for 2-7 days. Aliquots of reconstituted samples are stable at < -20°C for 3 months.
<b>Shipping</b>	This product is provided as lyophilized powder which is shipped with ice packs.
<b>Formulation</b>	Lyophilized from a 0.2 µm filtered solution of 20mM PB, 150mM NaCl, pH 7.4. Normally 5% - 8% trehalose, mannitol and 0.01% Tween 80 are added as protectants before lyophilization.
	Please refer to the specific buffer information in the printed manual.
<b>Reconstitution</b>	Please refer to the printed manual for detailed information.

### Data



> 95 % as determined by reducing SDS-PAGE.

### Background

Interleukin-17B (IL-17B) is a member of IL-17 cytokines family that plays important roles in host defence responses and inflammatory diseases. In addition to IL-17B, members of the IL-17 family include IL-17A, IL-17C, IL-17D, IL-17E and IL-17F. The six IL-17 cytokines are highly conserved at C terminus, and contain five spatially conserved cysteine residues that mediate dimerization. Expression of IL-17B protein has been reported in neurons, testis, ovary, stomach, pancreas, small intestine and chondrocytes. IL-17B binds to Interleukine-17 receptor B (IL-17 RB) and induces the production of inflammatory cytokines and the infiltration of inflammatory immune cells.

### For Research Use Only