

Recombinant Mouse HER3/ErbB3 Protein (His Tag)

Catalog Number: PKSM040391

Note: Centrifuge before opening to ensure complete recovery of vial contents.

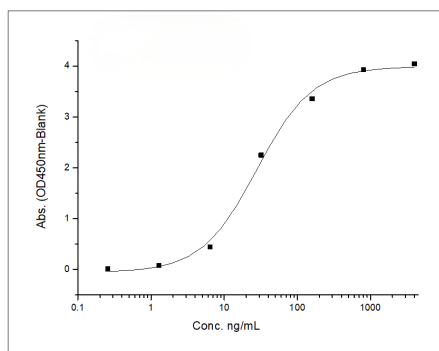
Description

Species	Mouse
Source	HEK293 Cells-derived Mouse HER3/ErbB3 protein Met 1-His 641, with an C-terminal His
Calculated MW	70.0 kDa
Observed MW	95 kDa
Accession	Q61526
Bio-activity	1. Immobilized mouse ErbB3-His at 10 µg/ml (100 µl/well) can bind biotinylated human NRG1 (isoform Beta1) with a linear range of 0.018-0.125 µg/ml. 2. Immobilized mouse ErbB3-His at 10 µg/ml (100 µl/well) can bind biotinylated human NRG1 (aa 2-246)-Fc with a linear range of 6. 25-100 ng/ml.

Properties

Purity	> 93 % as determined by reducing SDS-PAGE.
Endotoxin	< 1.0 EU per µg of the protein as determined by the LAL method.
Storage	Generally, lyophilized proteins are stable for up to 12 months when stored at -20 to -80°C. Reconstituted protein solution can be stored at 4-8°C for 2-7 days. Aliquots of reconstituted samples are stable at < -20°C for 3 months.
Shipping	This product is provided as lyophilized powder which is shipped with ice packs.
Formulation	Lyophilized from sterile PBS, pH 7.4 Normally 5% - 8% trehalose, mannitol and 0.01% Tween 80 are added as protectants before lyophilization. Please refer to the specific buffer information in the printed manual.
Reconstitution	Please refer to the printed manual for detailed information.

Data



Mouse HER3/ERBB3 Protein 41212, Immobilized Anti-Human Her3 Antibody, Human IgG1 at 2 µg/mL (100 µL/well) can bind Recombinant Mouse HER3 / ErbB3 Protein (His Tag) (Cat: PKSM040391), the EC₅₀ is 15-45 ng/mL.

Background

For Research Use Only

Toll-free: 1-888-852-8623
Web: www.elabscience.com

Tel: 1-832-243-6086
Email: techsupport@elabscience.com

Fax: 1-832-243-6017

ErbB3, also known as Her3(human epidermal growth factor receptor3), is a member of the epidermal growth factor receptor (EGFR) family of receptor tyrosine kinases. This membrane-bound glycoprotein has a neuregulin binding domain but has not an active kinase domain., and therefore can not mediate the intracellular signal transduction through protein phosphorylation. However, its heterodimer with ErbB2 or other EGFR members responsible for tyrosine phosphorylation forms a receptor complex with high affinity, and initiates the related pathway which lead to cell proliferation or differentiation. ErbB3 has been shown to implicated in numerous cancers, including prostate, bladder, and breast tumors. This protein has different isoforms derived from alternative splicing variants, and among which, the secreted isoform lacking the intermembrane region modulates the activity of membrane-bound form.

For Research Use Only

Toll-free: 1-888-852-8623

Web: www.elabscience.com

Tel: 1-832-243-6086

Email: techsupport@elabscience.com

Fax: 1-832-243-6017